



**ELECTRONIC COPY**

**LABORATORY GROWN DIAMOND REPORT**

August 21, 2023  
 IGI Report Number **LG593305097**  
 Description **LABORATORY GROWN  
DIAMOND**  
 Shape and Cutting Style **ROUND BRILLIANT**  
 Measurements **7.35 - 7.39 X 4.57 MM**

**GRADING RESULTS**

Carat Weight **1.53 CARAT**  
 Color Grade **E**  
 Clarity Grade **INTERNALLY FLAWLESS**  
 Cut Grade **IDEAL**

**ADDITIONAL GRADING INFORMATION**

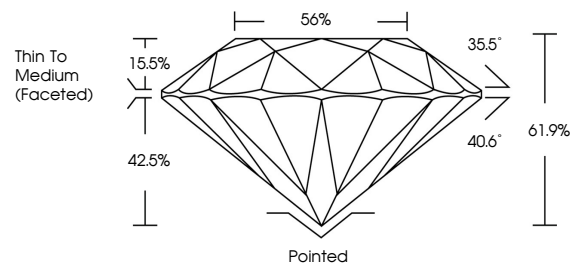
Polish **EXCELLENT**  
 Symmetry **EXCELLENT**  
 Fluorescence **NONE**  
 Inscription(s) **IGI LG593305097**

Comments: As Grown - No indication of post-growth treatment.  
 This Laboratory Grown Diamond was created by High Pressure High Temperature (HPHT) growth process.  
 Type II

**LABORATORY GROWN DIAMOND REPORT**

**LG593305097**  
 Report verification at [igi.org](http://igi.org)

**PROPORTIONS**



**CLARITY CHARACTERISTICS**



**KEY TO SYMBOLS**

Red symbols indicate internal characteristics.  
 Green symbols indicate external characteristics.

**LABORATORY GROWN  
DIAMOND REPORT**

**GRADING SCALES**

**CLARITY**

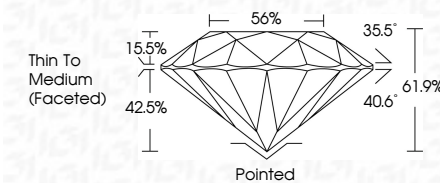
IF	VVS <sup>1-2</sup>	VS <sup>1-2</sup>	SI <sup>1-2</sup>	I <sup>1-3</sup>
Internally Flawless	Very Very Slightly Included	Very Slightly Included	Slightly Included	Included

**COLOR**

D	E	F	G	H	I	J	Faint	Very Light	Light

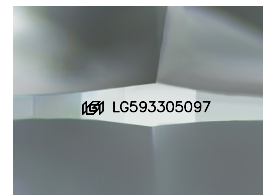
**LABORATORY GROWN DIAMOND REPORT**

August 21, 2023  
 IGI Report Number **LG593305097**  
 Description **LABORATORY GROWN  
DIAMOND**  
 Shape and Cutting Style **ROUND BRILLIANT**  
 Measurements **7.35 - 7.39 X 4.57 MM**  
**GRADING RESULTS**  
 Carat Weight **1.53 CARAT**  
 Color Grade **E**  
 Clarity Grade **INTERNALLY FLAWLESS**  
 Cut Grade **IDEAL**



**ADDITIONAL GRADING INFORMATION**

Polish **EXCELLENT**  
 Symmetry **EXCELLENT**  
 Fluorescence **NONE**  
 Inscription(s) **IGI LG593305097**  
 Comments: As Grown - No indication of post-growth treatment.  
 This Laboratory Grown Diamond was created by High Pressure High Temperature (HPHT) growth process.  
 Type II



Sample Image Used



**IGI**

August 21, 2023  
 IGI Report No **LG593305097**  
**ROUND BRILLIANT**  
 7.35 - 7.39 X 4.57 MM  
 Carat Weight **1.53 CARAT**  
 Color Grade **E**  
 Clarity Grade **IF**  
 Cut Grade **IDEAL**  
 Depth **61.9%**  
 Table **56%**  
 Girdle **Thin To Medium (Faceted)**  
 Culet **Pointed**  
 Polish **EXCELLENT**  
 Symmetry **EXCELLENT**  
 Fluorescence **NONE**  
 Inscription(s) **IGI LG593305097**  
 Comments: As Grown - No indication of post-growth treatment.  
 This Laboratory Grown Diamond was created by High Pressure High Temperature (HPHT) growth process.  
 Type II