



# INTERNATIONAL GEMOLOGICAL INSTITUTE

ELECTRONIC COPY

## LABORATORY GROWN DIAMOND REPORT

LG593307689

### LABORATORY GROWN DIAMOND REPORT

#### IGI LABORATORY GROWN DIAMOND IDENTIFICATION REPORT

August 21, 2023  
IGI Report Number LG593307689  
Description LABORATORY GROWN DIAMOND  
Shape and Cutting Style EMERALD CUT  
Measurements 5.06 X 3.67 X 2.49 MM

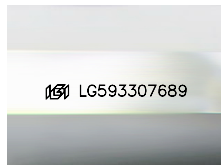
#### GRADING RESULTS

Carat Weight 0.45 CARAT  
Color Grade H  
Clarity Grade VS 1

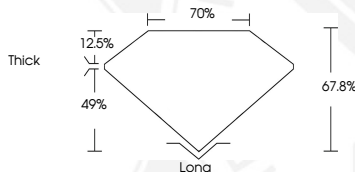
#### ADDITIONAL GRADING INFORMATION

Polish GOOD  
Symmetry VERY GOOD  
Fluorescence NONE  
Inscription(s) IGI LG593307689

Comments: This Laboratory Grown Diamond was created by Chemical Vapor Deposition (CVD) growth process and may include post-growth treatment. Type IIa



Sample Image Used



#### IGI LABORATORY GROWN DIAMOND ID REPORT

August 21, 2023  
IGI Report Number LG593307689  
EMERALD CUT  
5.06 X 3.67 X 2.49 MM  
Carat Weight 0.45 CARAT  
Color Grade H  
Clarity Grade VS 1  
Polish GOOD  
Symmetry VERY GOOD  
Fluorescence NONE  
Inscription(s) IGI LG593307689

Comments: This Laboratory Grown Diamond was created by Chemical Vapor Deposition (CVD) growth process and may include post-growth treatment. Type IIa

#### IGI LABORATORY GROWN DIAMOND ID REPORT

August 21, 2023  
IGI Report Number LG593307689  
EMERALD CUT  
5.06 X 3.67 X 2.49 MM  
Carat Weight 0.45 CARAT  
Color Grade H  
Clarity Grade VS 1  
Polish GOOD  
Symmetry VERY GOOD  
Fluorescence NONE  
Inscription(s) IGI LG593307689

Comments: This Laboratory Grown Diamond was created by Chemical Vapor Deposition (CVD) growth process and may include post-growth treatment. Type IIa



THIS DOCUMENT WAS PRODUCED WITH THE FOLLOWING SECURITY MEASURES: SPECIAL DOCUMENT PAPER, INK SCREENS, WATERMARK, BACKGROUND DESIGN, HOLOGRAM AND OTHER SECURITY FEATURES NOT LISTED AND DO EXCEED DOCUMENT SECURITY INDUSTRY GUIDELINES.

For terms & conditions and to verify this report, please visit [www.igi.org](http://www.igi.org)