



**INTERNATIONAL  
GEMOLOGICAL  
INSTITUTE**

**ELECTRONIC COPY**

**LABORATORY GROWN  
DIAMOND REPORT**

**LG593366228**

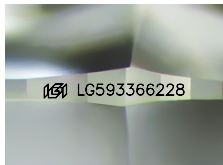
**IGI LABORATORY GROWN  
DIAMOND ID REPORT**

August 18, 2023  
IGI Report Number **LG593366228**  
**ROUND BRILLIANT**  
**5.34 - 5.36 X 3.41 MM**  
Carat Weight 0.62 CARAT  
Color Grade FANCY INTENSE PINK  
Clarity Grade VS 2  
Cuf Grade GOOD  
Polish GOOD  
Symmetry GOOD  
Fluorescence SLIGHT  
Inscription(s) LG593366228

**LABORATORY GROWN DIAMOND REPORT**

**IGI LABORATORY GROWN DIAMOND IDENTIFICATION REPORT**

August 18, 2023  
IGI Report Number LG593366228  
Description LABORATORY GROWN DIAMOND  
Shape and Cutting Style ROUND BRILLIANT  
Measurements 5.34 - 5.36 X 3.41 MM



Sample Image Used

**GRADING RESULTS**

Carat Weight 0.62 CARAT  
Color Grade FANCY INTENSE PINK  
Clarity Grade VS 2  
Cut Grade GOOD

**ADDITIONAL GRADING INFORMATION**

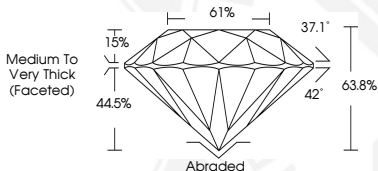
Polish GOOD  
Symmetry GOOD  
Fluorescence SLIGHT  
Inscription(s) LG593366228

Comments: This Laboratory Grown Diamond was created by Chemical Vapor Deposition (CVD) growth process. Indications of post-growth treatment.

**IGI LABORATORY GROWN  
DIAMOND ID REPORT**

August 18, 2023  
IGI Report Number **LG593366228**  
**ROUND BRILLIANT**  
**5.34 - 5.36 X 3.41 MM**  
Carat Weight 0.62 CARAT  
Color Grade FANCY INTENSE PINK  
Clarity Grade VS 2  
Cuf Grade GOOD  
Polish GOOD  
Symmetry GOOD  
Fluorescence SLIGHT  
Inscription(s) LG593366228

Comments: This Laboratory Grown Diamond was created by Chemical Vapor Deposition (CVD) growth process. Indications of post-growth treatment.



THIS DOCUMENT WAS PRODUCED WITH THE FOLLOWING SECURITY MEASURES: SPECIAL DOCUMENT PAPER, INK SCREENS, WATERMARK, BACKGROUND DESIGN, HOLOGRAM AND OTHER SECURITY FEATURES NOT LISTED AND DO EXCEED DOCUMENT SECURITY INDUSTRY GUIDELINES.

For terms & conditions and to verify this report, please visit [www.igi.org](http://www.igi.org)