



ELECTRONIC COPY

LABORATORY GROWN DIAMOND REPORT

August 22, 2023
 IGI Report Number **LG593368439**
 Description **LABORATORY GROWN
DIAMOND**
 Shape and Cutting Style **CUSHION MODIFIED BRILLIANT**
 Measurements **7.55 X 6.45 X 4.45 MM**

GRADING RESULTS

Carat Weight **2.03 CARATS**
 Color Grade **FANCY VIVID YELLOW**
 Clarity Grade **VVS 2**

ADDITIONAL GRADING INFORMATION

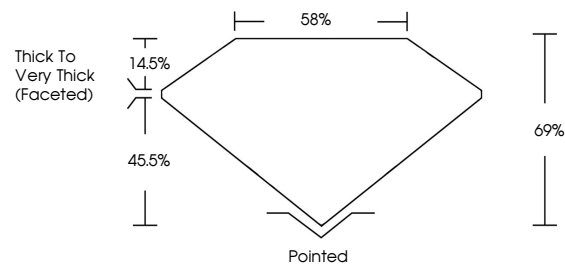
Polish **EXCELLENT**
 Symmetry **EXCELLENT**
 Fluorescence **NONE**
 Inscription(s) **IGI LG593368439**

Comments: As Grown - No indication of post-growth treatment.
 This Laboratory Grown Diamond was created by High Pressure High Temperature (HPHT) growth process.

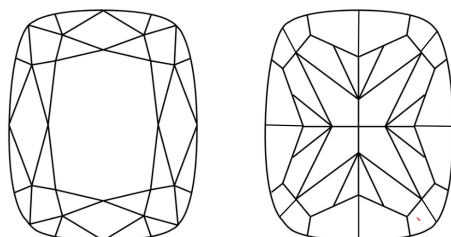
LABORATORY GROWN DIAMOND REPORT

LG593368439
 Report verification at igi.org

PROPORTIONS



CLARITY CHARACTERISTICS



KEY TO SYMBOLS

Red symbols indicate internal characteristics.
 Green symbols indicate external characteristics.

**LABORATORY GROWN
DIAMOND REPORT**

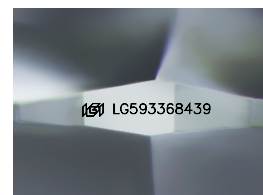
GRADING SCALES

CLARITY

IF	VVS ¹⁻²	VS ¹⁻²	SI ¹⁻²	I ¹⁻³
Internally Flawless	Very Very Slightly Included	Very Slightly Included	Slightly Included	Included

COLOR

D	E	F	G	H	I	J	Faint	Very Light	Light
Light Tint	Fancy Light	Fancy	Fancy Intense	Fancy Vivid					



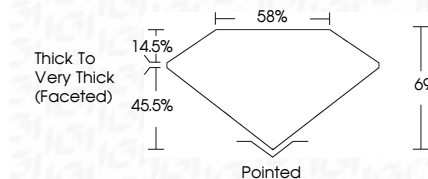
Sample Image Used

LABORATORY GROWN DIAMOND REPORT

August 22, 2023
 IGI Report Number **LG593368439**
 Description **LABORATORY GROWN
DIAMOND**
 Shape and Cutting Style **CUSHION MODIFIED
BRILLIANT**
 Measurements **7.55 X 6.45 X 4.45 MM**

GRADING RESULTS

Carat Weight **2.03 CARATS**
 Color Grade **FANCY VIVID YELLOW**
 Clarity Grade **VVS 2**



ADDITIONAL GRADING INFORMATION

Polish **EXCELLENT**
 Symmetry **EXCELLENT**
 Fluorescence **NONE**
 Inscription(s) **IGI LG593368439**
 Comments: As Grown - No indication of post-growth treatment.
 This Laboratory Grown Diamond was created by High Pressure High Temperature (HPHT) growth process.



IGI

August 22, 2023
 IGI Report No **LG593368439**
CUSHION MODIFIED BRILLIANT
2.03 CARATS
 Carat Weight **FANCY VIVID YELLOW**
 Color Grade **VVS 2**
 Depth **69%**
 Table **14.5%**
 Girdle **Thick to Very Thick (Faceted)**
 Culet **Pointed**
 Polish **EXCELLENT**
 Symmetry **EXCELLENT**
 Fluorescence **NONE**
 Inscription(s) **IGI LG593368439**

Comments: As Grown - No indication of post-growth treatment.
 This Laboratory Grown Diamond was created by High Pressure High Temperature (HPHT) growth process.

