



**INTERNATIONAL  
GEMOLOGICAL  
INSTITUTE**

**ELECTRONIC COPY**

**LABORATORY GROWN  
DIAMOND REPORT**

**LG593369907**

**IGI LABORATORY GROWN  
DIAMOND ID REPORT**

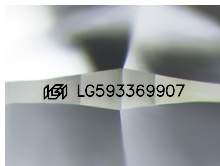
August 24, 2023  
IGI Report Number **LG593369907**  
**ROUND BRILLIANT**  
**5.81 - 5.82 X 3.52 MM**  
Carat Weight 0.73 CARAT  
Color Grade FANCY INTENSE  
YELLOW  
Clarity Grade VVS 2  
Cut Grade IDEAL  
Polish EXCELLENT  
Symmetry EXCELLENT  
Fluorescence NONE  
Inscription(s) LG593369907

Comments: This Laboratory Grown Diamond was created by Chemical Vapor Deposition (CVD) growth process and may include post-growth treatment.

**LABORATORY GROWN DIAMOND REPORT**

**IGI LABORATORY GROWN DIAMOND IDENTIFICATION REPORT**

August 24, 2023  
IGI Report Number LG593369907  
Description LABORATORY GROWN DIAMOND  
Shape and Cutting Style ROUND BRILLIANT  
Measurements 5.81 - 5.82 X 3.52 MM



Sample Image Used

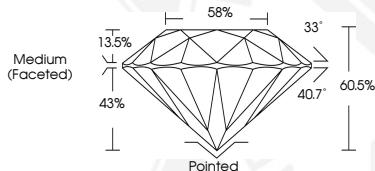
**GRADING RESULTS**

Carat Weight 0.73 CARAT  
Color Grade FANCY INTENSE YELLOW  
Clarity Grade VVS 2  
Cut Grade IDEAL

**ADDITIONAL GRADING INFORMATION**

Polish EXCELLENT  
Symmetry EXCELLENT  
Fluorescence NONE  
Inscription(s) LG593369907

Comments: This Laboratory Grown Diamond was created by Chemical Vapor Deposition (CVD) growth process and may include post-growth treatment.



**IGI LABORATORY GROWN  
DIAMOND ID REPORT**

August 24, 2023  
IGI Report Number **LG593369907**  
**ROUND BRILLIANT**  
**5.81 - 5.82 X 3.52 MM**  
Carat Weight 0.73 CARAT  
Color Grade FANCY INTENSE  
YELLOW  
Clarity Grade VVS 2  
Cut Grade IDEAL  
Polish EXCELLENT  
Symmetry EXCELLENT  
Fluorescence NONE  
Inscription(s) LG593369907

Comments: This Laboratory Grown Diamond was created by Chemical Vapor Deposition (CVD) growth process and may include post-growth treatment.

THIS DOCUMENT WAS PRODUCED WITH THE FOLLOWING SECURITY MEASURES: SPECIAL DOCUMENT PAPER, INK SCREENS, WATERMARK, BACKGROUND DESIGN, HOLOGRAM AND OTHER SECURITY FEATURES NOT LISTED AND DO EXCEED DOCUMENT SECURITY INDUSTRY GUIDELINES.

For terms & conditions and to verify this report, please visit [www.igi.org](http://www.igi.org)