



INTERNATIONAL GEMOLOGICAL INSTITUTE

ELECTRONIC COPY

LABORATORY GROWN DIAMOND REPORT

LG593370710

LABORATORY GROWN DIAMOND REPORT

IGI LABORATORY GROWN DIAMOND IDENTIFICATION REPORT

August 25, 2023
IGI Report Number LG593370710
Description LABORATORY GROWN DIAMOND
Shape and Cutting Style ROUND BRILLIANT
Measurements 5.87 - 5.91 X 3.71 MM

GRADING RESULTS

Carat Weight 0.80 CARAT
Color Grade FANCY INTENSE BROWNISH YELLOW
Clarity Grade VVS 2
Cut Grade EXCELLENT

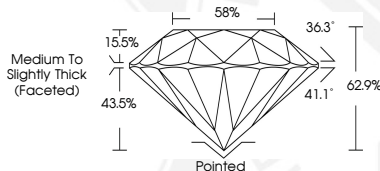
ADDITIONAL GRADING INFORMATION

Polish EXCELLENT
Symmetry EXCELLENT
Fluorescence NONE
Inscription(s) IGI LG593370710

Comments: This Laboratory Grown Diamond was created by Chemical Vapor Deposition (CVD) growth process and may include post-growth treatment.



Sample Image Used



IGI LABORATORY GROWN DIAMOND ID REPORT

August 25, 2023
IGI Report Number LG593370710
ROUND BRILLIANT
5.87 - 5.91 X 3.71 MM
Carat Weight 0.80 CARAT
Color Grade FANCY INTENSE BROWNISH YELLOW
Clarity Grade VVS 2
Cut Grade EXCELLENT
Polish EXCELLENT
Symmetry EXCELLENT
Fluorescence NONE
Inscription(s) IGI LG593370710
Comments: This Laboratory Grown Diamond was created by Chemical Vapor Deposition (CVD) growth process and may include post-growth treatment.

IGI LABORATORY GROWN DIAMOND ID REPORT

August 25, 2023
IGI Report Number LG593370710
ROUND BRILLIANT
5.87 - 5.91 X 3.71 MM
Carat Weight 0.80 CARAT
Color Grade FANCY INTENSE BROWNISH YELLOW
Clarity Grade VVS 2
Cut Grade EXCELLENT
Polish EXCELLENT
Symmetry EXCELLENT
Fluorescence NONE
Inscription(s) IGI LG593370710
Comments: This Laboratory Grown Diamond was created by Chemical Vapor Deposition (CVD) growth process and may include post-growth treatment.



THIS DOCUMENT WAS PRODUCED WITH THE FOLLOWING SECURITY MEASURES: SPECIAL DOCUMENT PAPER, INK SCREENS, WATERMARK, BACKGROUND DESIGN, HOLOGRAM AND OTHER SECURITY FEATURES NOT LISTED AND DO EXCEED DOCUMENT SECURITY INDUSTRY GUIDELINES.

For terms & conditions and to verify this report, please visit www.igi.org