



ELECTRONIC COPY

LABORATORY GROWN DIAMOND REPORT

August 23, 2023	
IGI Report Number	LG593372168
Description	LABORATORY GROWN DIAMOND
Shape and Cutting Style	ROUND BRILLIANT
Measurements	8.25 - 8.29 X 4.98 MM

GRADING RESULTS

Carat Weight	2.07 CARATS
Color Grade	G
Clarity Grade	SI 1
Cut Grade	IDEAL

ADDITIONAL GRADING INFORMATION

Polish	EXCELLENT
Symmetry	EXCELLENT
Fluorescence	NONE
Inscription(s)	 LG593372168

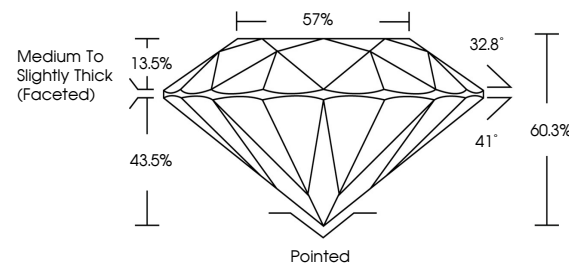
Comments: This Laboratory Grown Diamond was created by Chemical Vapor Deposition (CVD) growth process and may include post-growth treatment.
Type IIa

LABORATORY GROWN DIAMOND REPORT

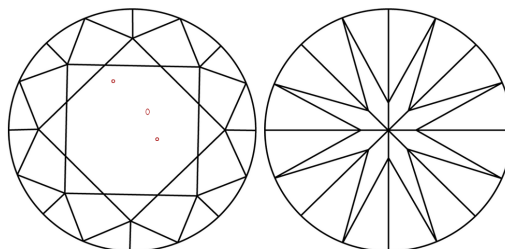
LG593372168

Report verification at igi.org

PROPORTIONS



CLARITY CHARACTERISTICS



KEY TO SYMBOLS

Red symbols indicate internal characteristics.
Green symbols indicate external characteristics.

LABORATORY GROWN
DIAMOND REPORT

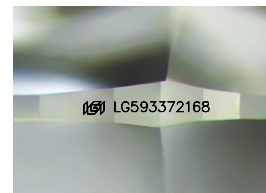
GRADING SCALES

CLARITY

IF	VVS ¹⁻²	VS ¹⁻²	SI ¹⁻²	I ¹⁻³
Internally Flawless	Very Very Slightly Included	Very Slightly Included	Slightly Included	Included

COLOR

D E F G H I J Faint Very Light Light



Sample Image Used



© IGI 2020, International Gemological Institute

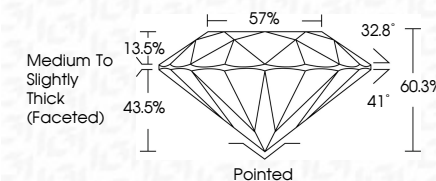
FD - 10 20

www.igi.org

LABORATORY GROWN DIAMOND REPORT

August 23, 2023	
IGI Report Number	LG593372168
Description	LABORATORY GROWN DIAMOND
Shape and Cutting Style	ROUND BRILLIANT
Measurements	8.25 - 8.29 X 4.98 MM

GRADING RESULTS	
Carat Weight	2.07 CARATS
Color Grade	G
Clarity Grade	SI 1
Cut Grade	IDEAL



ADDITIONAL GRADING INFORMATION

Polish	EXCELLENT
Symmetry	EXCELLENT
Fluorescence	NONE
Inscription(s)	(15) LG593372168

Comments: This Laboratory Grown Diamond was created by Chemical Vapor Deposition (CVD) growth process and may include post-growth treatment.
Type IIa



August 23, 2023
GI Report No LG593372168
ROUND BRILLIANT

2.07 CARATS	Carat Weight
G	Color Grade
S11	Clarity Grade
IDP AL	Cut Grade
60.9%	Depth
57%	Table
Medium to Slightly Thick (Faceted)	Girdle
	Culet
	Polish
	Symmetry
	Fluorescence
	Fluorescence Color
	Fluorescence Intensity
	Fluorescence Duration
	Fluorescence Spectrum
	Fluorescence Wavelength
	Fluorescence Power
	Fluorescence Filter
	Fluorescence Detector
	Fluorescence Amplifier
	Fluorescence Readout
	Fluorescence Software
	Fluorescence Hardware
	Fluorescence Calibration
	Fluorescence Standards
	Fluorescence Reference
	Fluorescence Comparison
	Fluorescence Analysis
	Fluorescence Interpretation
	Fluorescence Reporting
	Fluorescence Archiving
	Fluorescence Sharing
	Fluorescence Printing
	Fluorescence Exporting
	Fluorescence Importing
	Fluorescence Deleting
	Fluorescence Renaming
	Fluorescence Moving
	Fluorescence Copying
	Fluorescence Pasting
	Fluorescence Undoing
	Fluorescence Redoing
	Fluorescence Saving
	Fluorescence Opening
	Fluorescence Closing
	Fluorescence Quitting
	Fluorescence Help
	Fluorescence About
	Fluorescence License
	Fluorescence Privacy
	Fluorescence Terms
	Fluorescence Conditions
	Fluorescence Disclaimer
	Fluorescence Warranty
	Fluorescence Support
	Fluorescence Feedback
	Fluorescence Contact
	Fluorescence Address
	Fluorescence Phone
	Fluorescence Email
	Fluorescence Website
	Fluorescence Social
	Fluorescence Blog
	Fluorescence Forum
	Fluorescence Chat
	Fluorescence Video
	Fluorescence Audio
	Fluorescence Images
	Fluorescence Documents
	Fluorescence Applications
	Fluorescence Utilities
	Fluorescence Plugins
	Fluorescence Extensions
	Fluorescence Themes
	Fluorescence Skins
	Fluorescence Languages
	Fluorescence Encodings
	Fluorescence Fonts
	Fluorescence Colors
	Fluorescence Sounds
	Fluorescence Animations
	Fluorescence Effects
	Fluorescence Transitions
	Fluorescence Behaviors
	Fluorescence Properties
	Fluorescence Attributes
	Fluorescence Characteristics
	Fluorescence Features
	Fluorescence Functions
	Fluorescence Methods
	Fluorescence Operations
	Fluorescence Actions
	Fluorescence Events
	Fluorescence Triggers
	Fluorescence Timers
	Fluorescence Schedulers
	Fluorescence Executors
	Fluorescence Monitors
	Fluorescence Loggers
	Fluorescence Tracers
	Fluorescence Debuggers
	Fluorescence Testers
	Fluorescence Validators
	Fluorescence Verifiers
	Fluorescence Checkers
	Fluorescence Analyzers
	Fluorescence Inspectors
	Fluorescence Profilers
	Fluorescence Benchmarks
	Fluorescence Comparators
	Fluorescence Sorters
	Fluorescence Filters
	Fluorescence Mappers
	Fluorescence Aggregators
	Fluorescence Transformers
	Fluorescence Reducers
	Fluorescence Executors
	Fluorescence Monitors
	Fluorescence Loggers
	Fluorescence Tracers
	Fluorescence Debuggers
	Fluorescence Testers
	Fluorescence Validators
	Fluorescence Verifiers
	Fluorescence Checkers
	Fluorescence Analyzers
	Fluorescence Inspectors
	Fluorescence Profilers
	Fluorescence Benchmarks
	Fluorescence Comparators
	Fluorescence Sorters
	Fluorescence Filters
	Fluorescence Mappers
	Fluorescence Aggregators
	Fluorescence Transformers
	Fluorescence Reducers
	Fluorescence Executors
	Fluorescence Monitors
	Fluorescence Loggers
	Fluorescence Tracers
	Fluorescence Debuggers
	Fluorescence Testers
	Fluorescence Validators
	Fluorescence Verifiers
	Fluorescence Checkers
	Fluorescence Analyzers
	Fluorescence Inspectors
	Fluorescence Profilers
	Fluorescence Benchmarks
	Fluorescence Comparators
	Fluorescence Sorters
	Fluorescence Filters
	Fluorescence Mappers
	Fluorescence Aggregators
	Fluorescence Transformers
	Fluorescence Reducers
	Fluorescence Executors
	Fluorescence Monitors
	Fluorescence Loggers
	Fluorescence Tracers
	Fluorescence Debuggers
	Fluorescence Testers
	Fluorescence Validators
	Fluorescence Verifiers
	Fluorescence Checkers
	Fluorescence Analyzers
	Fluorescence Inspectors
	Fluorescence Profilers
	Fluorescence Benchmarks
	Fluorescence Comparators
	Fluorescence Sorters
	Fluorescence Filters
	Fluorescence Mappers
	Fluorescence Aggregators

Comments:
This Laboratory Grown Diamond was created by Chemical Vapor Deposition (CVD) growth process and may include post-growth treatment.