



**INTERNATIONAL
GEMOLOGICAL
INSTITUTE**

ELECTRONIC COPY

**LABORATORY GROWN
DIAMOND REPORT**

LG593372637

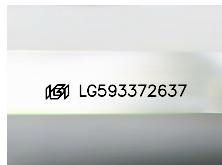
**IGI LABORATORY GROWN
DIAMOND ID REPORT**

August 30, 2023
IGI Report Number **LG593372637**
PRINCESS CUT
5.84 X 5.86 X 4.32 MM
Carat Weight 1.31 CARAT
Color Grade F
Clarity Grade VS 2
Cut Grade VERY GOOD
Polish EXCELLENT
Symmetry VERY GOOD
Fluorescence NONE
Inscription(s) LG593372637

LABORATORY GROWN DIAMOND REPORT

IGI LABORATORY GROWN DIAMOND IDENTIFICATION REPORT

August 30, 2023
IGI Report Number LG593372637
Description LABORATORY GROWN DIAMOND
Shape and Cutting Style PRINCESS CUT
Measurements 5.84 X 5.86 X 4.32 MM



Sample Image Used

Comments: This Laboratory Grown Diamond was created by Chemical Vapor Deposition (CVD) growth process and may include post-growth treatment.

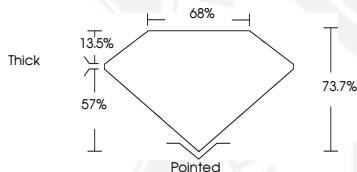
GRADING RESULTS

Carat Weight 1.31 CARAT
Color Grade F
Clarity Grade VS 2
Cut Grade VERY GOOD

ADDITIONAL GRADING INFORMATION

Polish EXCELLENT
Symmetry VERY GOOD
Fluorescence NONE
Inscription(s) LG593372637

Comments: This Laboratory Grown Diamond was created by Chemical Vapor Deposition (CVD) growth process and may include post-growth treatment.



**IGI LABORATORY GROWN
DIAMOND ID REPORT**

August 30, 2023
IGI Report Number **LG593372637**
PRINCESS CUT
5.84 X 5.86 X 4.32 MM
Carat Weight 1.31 CARAT
Color Grade F
Clarity Grade VS 2
Cut Grade VERY GOOD
Polish EXCELLENT
Symmetry VERY GOOD
Fluorescence NONE
Inscription(s) LG593372637

Comments: This Laboratory Grown Diamond was created by Chemical Vapor Deposition (CVD) growth process and may include post-growth treatment.

THIS DOCUMENT WAS PRODUCED WITH THE FOLLOWING SECURITY MEASURES: SPECIAL DOCUMENT PAPER, INK SCREENS, WATERMARK, BACKGROUND DESIGN, HOLOGRAM AND OTHER SECURITY FEATURES NOT LISTED AND DO EXCEED DOCUMENT SECURITY INDUSTRY GUIDELINES.

For terms & conditions and to verify this report, please visit www.igi.org