



INTERNATIONAL GEMOLOGICAL INSTITUTE

ELECTRONIC COPY

LABORATORY GROWN DIAMOND REPORT

LG593372645


IGI LABORATORY GROWN DIAMOND ID REPORT

August 31, 2023

IGI Report Number **LG593372645**

**CUT CORNERED RECTANGULAR
MODIFIED BRILLIANT**

7.04 X 5.03 X 3.46 MM

Carat Weight 1.07 CARAT
Color Grade J
Clarity Grade VS 2
Cut Grade VERY GOOD
Polish EXCELLENT
Symmetry VERY GOOD
Fluorescence NONE
Inscription(s)  LG593372645

Comments: This Laboratory Grown Diamond was created by Chemical Vapor Deposition (CVD) growth process and may include post-growth treatment.

LABORATORY GROWN DIAMOND REPORT

IGI LABORATORY GROWN DIAMOND IDENTIFICATION REPORT

August 31, 2023

IGI Report Number

LG593372645

Description LABORATORY GROWN DIAMOND

Shape and Cutting Style CUT CORNERED RECTANGULAR MODIFIED
BRILLIANT

Measurements 7.04 X 5.03 X 3.46 MM

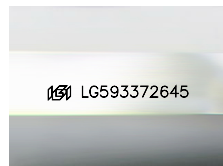
GRADING RESULTS

Carat Weight 1.07 CARAT
Color Grade J
Clarity Grade VS 2
Cut Grade VERY GOOD

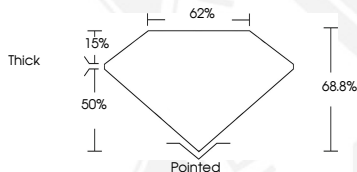
ADDITIONAL GRADING INFORMATION

Polish EXCELLENT
Symmetry VERY GOOD
Fluorescence NONE
Inscription(s)  LG593372645

Comments: This Laboratory Grown Diamond was created by Chemical Vapor Deposition (CVD) growth process and may include post-growth treatment.



Sample Image Used




IGI LABORATORY GROWN DIAMOND ID REPORT

August 31, 2023

IGI Report Number **LG593372645**

**CUT CORNERED RECTANGULAR
MODIFIED BRILLIANT**

7.04 X 5.03 X 3.46 MM

Carat Weight 1.07 CARAT
Color Grade J
Clarity Grade VS 2
Cut Grade VERY GOOD
Polish EXCELLENT
Symmetry VERY GOOD
Fluorescence NONE
Inscription(s)  LG593372645

Comments: This Laboratory Grown Diamond was created by Chemical Vapor Deposition (CVD) growth process and may include post-growth treatment.



THIS DOCUMENT WAS PRODUCED WITH THE FOLLOWING SECURITY MEASURES: SPECIAL DOCUMENT PAPER, INK SCREENS, WATERMARK, BACKGROUND DESIGN, HOLOGRAM AND OTHER SECURITY FEATURES NOT LISTED AND DO EXCEED DOCUMENT SECURITY INDUSTRY GUIDELINES.

For terms & conditions and to verify this report, please visit www.igi.org