



**INTERNATIONAL
GEMOLOGICAL
INSTITUTE**

ELECTRONIC COPY

**LABORATORY GROWN
DIAMOND REPORT**

LG593372650

**IGI LABORATORY GROWN
DIAMOND ID REPORT**

August 29, 2023

IGI Report Number **LG593372650**

**CUT CORNERED RECTANGULAR
MODIFIED BRILLIANT**

6.91 X 4.89 X 3.35 MM

Carat Weight 1.01 CARAT
Color Grade E
Clarity Grade VS 2
Cut Grade EXCELLENT
Polish VERY GOOD
Symmetry EXCELLENT
Fluorescence NONE
Inscription(s) LG593372650

Comments: This Laboratory Grown Diamond was created by Chemical Vapor Deposition (CVD) growth process and may include post-growth treatment.

LABORATORY GROWN DIAMOND REPORT

IGI LABORATORY GROWN DIAMOND IDENTIFICATION REPORT

August 29, 2023

IGI Report Number LG593372650

Description LABORATORY GROWN DIAMOND

Shape and Cutting Style CUT CORNERED RECTANGULAR MODIFIED BRILLIANT

Measurements 6.91 X 4.89 X 3.35 MM

GRADING RESULTS

Carat Weight 1.01 CARAT

Color Grade E

Clarity Grade VS 2

Cut Grade EXCELLENT

ADDITIONAL GRADING INFORMATION

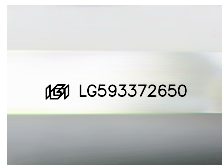
Polish VERY GOOD

Symmetry EXCELLENT

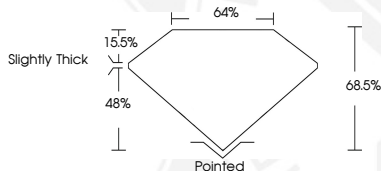
Fluorescence NONE

Inscription(s) LG593372650

Comments: This Laboratory Grown Diamond was created by Chemical Vapor Deposition (CVD) growth process and may include post-growth treatment.



Sample Image Used



**IGI LABORATORY GROWN
DIAMOND ID REPORT**

August 29, 2023

IGI Report Number **LG593372650**

**CUT CORNERED RECTANGULAR
MODIFIED BRILLIANT**

6.91 X 4.89 X 3.35 MM

Carat Weight 1.01 CARAT
Color Grade E
Clarity Grade VS 2
Cut Grade EXCELLENT
Polish VERY GOOD
Symmetry EXCELLENT
Fluorescence NONE
Inscription(s) LG593372650

Comments: This Laboratory Grown Diamond was created by Chemical Vapor Deposition (CVD) growth process and may include post-growth treatment.

THIS DOCUMENT WAS PRODUCED WITH THE FOLLOWING SECURITY MEASURES: SPECIAL DOCUMENT PAPER, INK SCREENS, WATERMARK, BACKGROUND DESIGN, HOLOGRAM AND OTHER SECURITY FEATURES NOT LISTED AND DO EXCEED DOCUMENT SECURITY INDUSTRY GUIDELINES.

For terms & conditions and to verify this report, please visit www.igi.org