



**INTERNATIONAL  
GEMOLOGICAL  
INSTITUTE**

**ELECTRONIC COPY**

**LABORATORY GROWN  
DIAMOND REPORT**

**LG593372656**

**IGI LABORATORY GROWN  
DIAMOND ID REPORT**

August 29, 2023

IGI Report Number **LG593372656**

**CUT CORNERED RECTANGULAR  
MODIFIED BRILLIANT**

**6.97 X 4.86 X 3.46 MM**

Carat Weight	1.00 CARAT
Color Grade	D
Clarity Grade	VS 2
Cut Grade	VERY GOOD
Polish	EXCELLENT
Symmetry	EXCELLENT
Fluorescence	NONE
Inscription(s)	LG593372656

Comments: This Laboratory Grown Diamond was created by Chemical Vapor Deposition (CVD) growth process and may include post-growth treatment.

**LABORATORY GROWN DIAMOND REPORT**

**IGI LABORATORY GROWN DIAMOND IDENTIFICATION REPORT**

August 29, 2023

IGI Report Number **LG593372656**

Description **LABORATORY GROWN DIAMOND**

Shape and Cutting Style **CUT CORNERED RECTANGULAR MODIFIED  
BRILLIANT**

Measurements **6.97 X 4.86 X 3.46 MM**

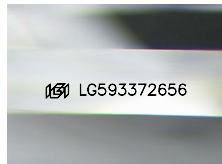
**GRADING RESULTS**

Carat Weight	1.00 CARAT
Color Grade	D
Clarity Grade	VS 2
Cut Grade	VERY GOOD

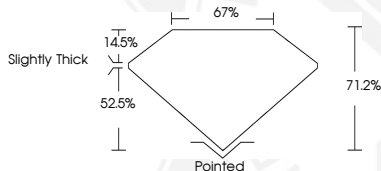
**ADDITIONAL GRADING INFORMATION**

Polish	EXCELLENT
Symmetry	EXCELLENT
Fluorescence	NONE
Inscription(s)	LG593372656

Comments: This Laboratory Grown Diamond was created by Chemical Vapor Deposition (CVD) growth process and may include post-growth treatment.



Sample Image Used



**IGI LABORATORY GROWN  
DIAMOND ID REPORT**

August 29, 2023

IGI Report Number **LG593372656**

**CUT CORNERED RECTANGULAR  
MODIFIED BRILLIANT**

**6.97 X 4.86 X 3.46 MM**

Carat Weight	1.00 CARAT
Color Grade	D
Clarity Grade	VS 2
Cut Grade	VERY GOOD
Polish	EXCELLENT
Symmetry	EXCELLENT
Fluorescence	NONE
Inscription(s)	LG593372656

Comments: This Laboratory Grown Diamond was created by Chemical Vapor Deposition (CVD) growth process and may include post-growth treatment.

THIS DOCUMENT WAS PRODUCED WITH THE FOLLOWING SECURITY MEASURES: SPECIAL DOCUMENT PAPER, INK SCREENS, WATERMARK, BACKGROUND DESIGN, HOLOGRAM AND OTHER SECURITY FEATURES NOT LISTED AND DO EXCEED DOCUMENT SECURITY INDUSTRY GUIDELINES.

For terms & conditions and to verify this report, please visit [www.igi.org](http://www.igi.org)