



**INTERNATIONAL  
GEMOLOGICAL  
INSTITUTE**

**ELECTRONIC COPY**

**LABORATORY GROWN  
DIAMOND REPORT**

**LG593372675**

**IGI LABORATORY GROWN  
DIAMOND ID REPORT**

August 25, 2023  
IGI Report Number **LG593372675**  
**CUT CORNERED RECTANGULAR  
MODIFIED BRILLIANT**  
**7.75 X 5.41 X 3.70 MM**  
Carat Weight 1.35 CARAT  
Color Grade G  
Clarity Grade VS 2  
Cut Grade VERY GOOD  
Polish EXCELLENT  
Symmetry VERY GOOD  
Fluorescence NONE  
Inscription(s) LG593372675

Comments: This Laboratory Grown Diamond was created by Chemical Vapor Deposition (CVD) growth process and may include post-growth treatment.

**LABORATORY GROWN DIAMOND REPORT**

**IGI LABORATORY GROWN DIAMOND IDENTIFICATION REPORT**

August 25, 2023  
IGI Report Number LG593372675  
Description LABORATORY GROWN DIAMOND  
Shape and Cutting Style CUT CORNERED RECTANGULAR MODIFIED BRILLIANT  
Measurements 7.75 X 5.41 X 3.70 MM

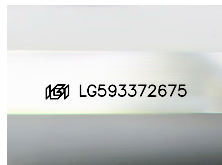
**GRADING RESULTS**

Carat Weight 1.35 CARAT  
Color Grade G  
Clarity Grade VS 2  
Cut Grade VERY GOOD

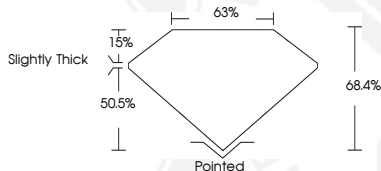
**ADDITIONAL GRADING INFORMATION**

Polish EXCELLENT  
Symmetry VERY GOOD  
Fluorescence NONE  
Inscription(s) LG593372675

Comments: This Laboratory Grown Diamond was created by Chemical Vapor Deposition (CVD) growth process and may include post-growth treatment.



Sample Image Used



**IGI LABORATORY GROWN  
DIAMOND ID REPORT**

August 25, 2023  
IGI Report Number **LG593372675**  
**CUT CORNERED RECTANGULAR  
MODIFIED BRILLIANT**  
**7.75 X 5.41 X 3.70 MM**  
Carat Weight 1.35 CARAT  
Color Grade G  
Clarity Grade VS 2  
Cut Grade VERY GOOD  
Polish EXCELLENT  
Symmetry VERY GOOD  
Fluorescence NONE  
Inscription(s) LG593372675

Comments: This Laboratory Grown Diamond was created by Chemical Vapor Deposition (CVD) growth process and may include post-growth treatment.

THIS DOCUMENT WAS PRODUCED WITH THE FOLLOWING SECURITY MEASURES: SPECIAL DOCUMENT PAPER, INK SCREENS, WATERMARK, BACKGROUND DESIGN, HOLOGRAM AND OTHER SECURITY FEATURES NOT LISTED AND DO EXCEED DOCUMENT SECURITY INDUSTRY GUIDELINES.

For terms & conditions and to verify this report, please visit [www.igi.org](http://www.igi.org)