



**INTERNATIONAL
GEMOLOGICAL
INSTITUTE**

ELECTRONIC COPY

**LABORATORY GROWN
DIAMOND REPORT**

LG593372677

**IGI LABORATORY GROWN
DIAMOND ID REPORT**

August 30, 2023

IGI Report Number **LG593372677**

**CUT CORNERED RECTANGULAR
MODIFIED BRILLIANT**

8.14 X 5.52 X 3.78 MM

Carat Weight 1.46 CARAT
Color Grade G
Clarity Grade VS 2
Cut Grade VERY GOOD
Polish EXCELLENT
Symmetry VERY GOOD
Fluorescence NONE
Inscription(s) LG593372677

Comments: This Laboratory Grown Diamond was created by Chemical Vapor Deposition (CVD) growth process and may include post-growth treatment.

LABORATORY GROWN DIAMOND REPORT

IGI LABORATORY GROWN DIAMOND IDENTIFICATION REPORT

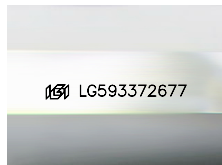
August 30, 2023

IGI Report Number LG593372677

Description LABORATORY GROWN DIAMOND

Shape and Cutting Style CUT CORNERED RECTANGULAR MODIFIED BRILLIANT

Measurements 8.14 X 5.52 X 3.78 MM



Sample Image Used

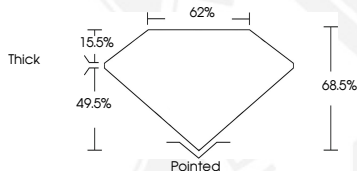
GRADING RESULTS

Carat Weight 1.46 CARAT
Color Grade G
Clarity Grade VS 2
Cut Grade VERY GOOD

ADDITIONAL GRADING INFORMATION

Polish EXCELLENT
Symmetry VERY GOOD
Fluorescence NONE
Inscription(s) LG593372677

Comments: This Laboratory Grown Diamond was created by Chemical Vapor Deposition (CVD) growth process and may include post-growth treatment.



**IGI LABORATORY GROWN
DIAMOND ID REPORT**

August 30, 2023

IGI Report Number **LG593372677**

**CUT CORNERED RECTANGULAR
MODIFIED BRILLIANT**

8.14 X 5.52 X 3.78 MM

Carat Weight 1.46 CARAT
Color Grade G
Clarity Grade VS 2
Cut Grade VERY GOOD
Polish EXCELLENT
Symmetry VERY GOOD
Fluorescence NONE
Inscription(s) LG593372677

Comments: This Laboratory Grown Diamond was created by Chemical Vapor Deposition (CVD) growth process and may include post-growth treatment.

THIS DOCUMENT WAS PRODUCED WITH THE FOLLOWING SECURITY MEASURES: SPECIAL DOCUMENT PAPER, INK SCREENS, WATERMARK, BACKGROUND DESIGN, HOLOGRAM AND OTHER SECURITY FEATURES NOT LISTED AND DO EXCEED DOCUMENT SECURITY INDUSTRY GUIDELINES.

For terms & conditions and to verify this report, please visit www.igi.org