



# INTERNATIONAL GEMOLOGICAL INSTITUTE

ELECTRONIC COPY

## LABORATORY GROWN DIAMOND REPORT

LG593372679

### LABORATORY GROWN DIAMOND REPORT

#### IGI LABORATORY GROWN DIAMOND IDENTIFICATION REPORT

August 25, 2023  
IGI Report Number LG593372679  
Description LABORATORY GROWN DIAMOND  
Shape and Cutting Style SQUARE EMERALD CUT  
Measurements 5.39 X 5.34 X 3.64 MM

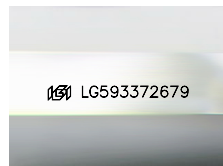
#### GRADING RESULTS

Carat Weight 1.00 CARAT  
Color Grade H  
Clarity Grade VS 2  
Cut Grade VERY GOOD

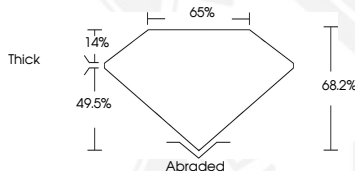
#### ADDITIONAL GRADING INFORMATION

Polish EXCELLENT  
Symmetry VERY GOOD  
Fluorescence NONE  
Inscription(s) IGI LG593372679

Comments: This Laboratory Grown Diamond was created by Chemical Vapor Deposition (CVD) growth process and may include post-growth treatment.



Sample Image Used



#### IGI LABORATORY GROWN DIAMOND ID REPORT

August 25, 2023  
IGI Report Number LG593372679  
SQUARE EMERALD CUT  
5.39 X 5.34 X 3.64 MM  
Carat Weight 1.00 CARAT  
Color Grade H  
Clarity Grade VS 2  
Cut Grade VERY GOOD  
Polish EXCELLENT  
Symmetry VERY GOOD  
Fluorescence NONE  
Inscription(s) IGI LG593372679

Comments: This Laboratory Grown Diamond was created by Chemical Vapor Deposition (CVD) growth process and may include post-growth treatment.

#### IGI LABORATORY GROWN DIAMOND ID REPORT

August 25, 2023  
IGI Report Number LG593372679  
SQUARE EMERALD CUT  
5.39 X 5.34 X 3.64 MM  
Carat Weight 1.00 CARAT  
Color Grade H  
Clarity Grade VS 2  
Cut Grade VERY GOOD  
Polish EXCELLENT  
Symmetry VERY GOOD  
Fluorescence NONE  
Inscription(s) IGI LG593372679

Comments: This Laboratory Grown Diamond was created by Chemical Vapor Deposition (CVD) growth process and may include post-growth treatment.



THIS DOCUMENT WAS PRODUCED WITH THE FOLLOWING SECURITY MEASURES: SPECIAL DOCUMENT PAPER, INK SCREENS, WATERMARK, BACKGROUND DESIGN, HOLOGRAM AND OTHER SECURITY FEATURES NOT LISTED AND DO EXCEED DOCUMENT SECURITY INDUSTRY GUIDELINES.

For terms & conditions and to verify this report, please visit [www.igi.org](http://www.igi.org)