



**INTERNATIONAL  
GEMOLOGICAL  
INSTITUTE**

**ELECTRONIC COPY**

**LABORATORY GROWN  
DIAMOND REPORT**

**LG593372685**

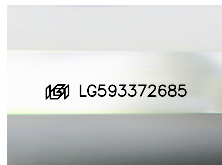
**IGI LABORATORY GROWN  
DIAMOND ID REPORT**

August 25, 2023  
IGI Report Number **LG593372685**  
**SQUARE EMERALD CUT**  
**5.57 X 5.55 X 3.76 MM**  
Carat Weight 1.03 CARAT  
Color Grade H  
Clarity Grade SI 1  
Cut Grade VERY GOOD  
Polish EXCELLENT  
Symmetry VERY GOOD  
Fluorescence NONE  
Inscription(s) LG593372685

**LABORATORY GROWN DIAMOND REPORT**

**IGI LABORATORY GROWN DIAMOND IDENTIFICATION REPORT**

August 25, 2023  
IGI Report Number LG593372685  
Description LABORATORY GROWN DIAMOND  
Shape and Cutting Style SQUARE EMERALD CUT  
Measurements 5.57 X 5.55 X 3.76 MM



Sample Image Used

Comments: This Laboratory Grown Diamond was created by Chemical Vapor Deposition (CVD) growth process and may include post-growth treatment.

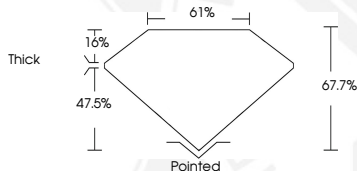
**GRADING RESULTS**

Carat Weight 1.03 CARAT  
Color Grade H  
Clarity Grade SI 1  
Cut Grade VERY GOOD

**ADDITIONAL GRADING INFORMATION**

Polish EXCELLENT  
Symmetry VERY GOOD  
Fluorescence NONE  
Inscription(s) LG593372685

Comments: This Laboratory Grown Diamond was created by Chemical Vapor Deposition (CVD) growth process and may include post-growth treatment.



**IGI LABORATORY GROWN  
DIAMOND ID REPORT**

August 25, 2023  
IGI Report Number **LG593372685**  
**SQUARE EMERALD CUT**  
**5.57 X 5.55 X 3.76 MM**  
Carat Weight 1.03 CARAT  
Color Grade H  
Clarity Grade SI 1  
Cut Grade VERY GOOD  
Polish EXCELLENT  
Symmetry VERY GOOD  
Fluorescence NONE  
Inscription(s) LG593372685

Comments: This Laboratory Grown Diamond was created by Chemical Vapor Deposition (CVD) growth process and may include post-growth treatment.

THIS DOCUMENT WAS PRODUCED WITH THE FOLLOWING SECURITY MEASURES: SPECIAL DOCUMENT PAPER, INK SCREENS, WATERMARK, BACKGROUND DESIGN, HOLOGRAM AND OTHER SECURITY FEATURES NOT LISTED AND DO EXCEED DOCUMENT SECURITY INDUSTRY GUIDELINES.

For terms & conditions and to verify this report, please visit [www.igi.org](http://www.igi.org)