



ELECTRONIC COPY

LABORATORY GROWN DIAMOND REPORT

LG593374055

Report verification at igi.org

LABORATORY GROWN
DIAMOND REPORT

LABORATORY GROWN DIAMOND REPORT

LABORATORY GROWN DIAMOND REPORT

August 1, 2023
IGI Report Number **LG593374055**

Description **LABORATORY GROWN
DIAMOND**

Shape and Cutting Style **EMERALD CUT**

Measurements **6.85 X 4.68 X 3.23 MM**

GRADING RESULTS

Carat Weight **1.07 CARAT**

Color Grade **F**

Clarity Grade **VS 1**

ADDITIONAL GRADING INFORMATION

Polish **EXCELLENT**

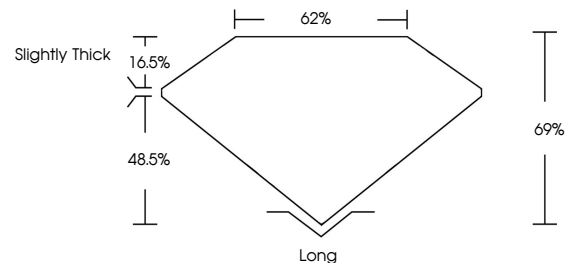
Symmetry **VERY GOOD**

Fluorescence **NONE**

Inscription(s) **IGI LG593374055**

Comments: This Laboratory Grown Diamond was created by Chemical Vapor Deposition (CVD) growth process and may include post-growth treatment. Type IIa

PROPORTIONS



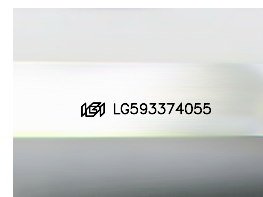
GRADING SCALES

CLARITY

IF	VVS ¹⁻²	VS ¹⁻²	SI ¹⁻²	I ¹⁻³
Internally Flawless	Very Very Slightly Included	Very Slightly Included	Slightly Included	Included

COLOR

D	E	F	G	H	I	J	Faint	Very Light	Light
---	---	---	---	---	---	---	-------	------------	-------



Sample Image Used

August 1, 2023
IGI Report Number **LG593374055**
Description **LABORATORY GROWN
DIAMOND**

Shape and Cutting Style **EMERALD CUT**

Measurements **6.85 X 4.68 X 3.23 MM**

GRADING RESULTS

Carat Weight **1.07 CARAT**

Color Grade **F**

Clarity Grade **VS 1**

ADDITIONAL GRADING INFORMATION

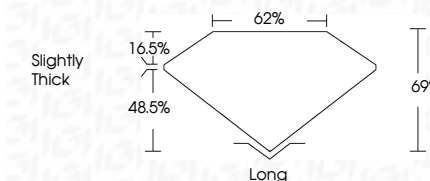
Polish **EXCELLENT**

Symmetry **VERY GOOD**

Fluorescence **NONE**

Inscription(s) **IGI LG593374055**

Comments: This Laboratory Grown Diamond was created by Chemical Vapor Deposition (CVD) growth process and may include post-growth treatment. Type IIa



IGI

August 1, 2023
IGI Report No LG593374055
EMERALD CUT
Carat Weight **1.07 CARAT**
Color Grade **F**
Clarity Grade **VS 1**
Table **6%**
Girdle **6%**
Culet **Slightly Thick**
Polish **Long**
Symmetry **EXCELLENT**
Fluorescence **VERY GOOD**
Inscription(s) **NONE**
IGI LG593374055

Comments: This Laboratory Grown Diamond was created by Chemical Vapor Deposition (CVD) growth process and may include post-growth treatment. Type IIa