



**ELECTRONIC COPY**

## LABORATORY GROWN DIAMOND REPORT

August 3, 2023	
IGI Report Number	LG593381357
Description	LABORATORY GROWN DIAMOND
Shape and Cutting Style	ROUND BRILLIANT
Measurements	8.15 - 8.23 X 5.03 MM
<b>GRADING RESULTS</b>	
Carat Weight	2.08 CARATS
Color Grade	F
Clarity Grade	VS 1
Cut Grade	IDEAL

### ADDITIONAL GRADING INFORMATION

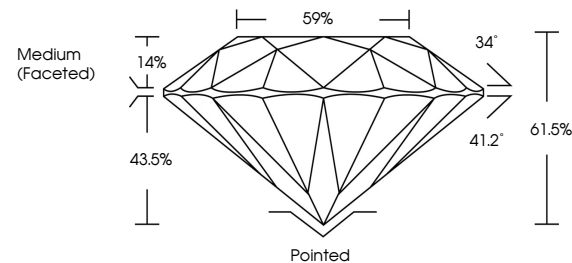
Polish	EXCELLENT
Symmetry	EXCELLENT
Fluorescence	NONE
Inscription(s)	 LG593381357

Comments: This Laboratory Grown Diamond was created by Chemical Vapor Deposition (CVD) growth process and may include post-growth treatment.  
Type IIa

## LABORATORY GROWN DIAMOND REPORT

LG593381357  
Report verification at [igi.org](https://igi.org)

## PROPORTIONS

LABORATORY GROWN  
DIAMOND REPORT

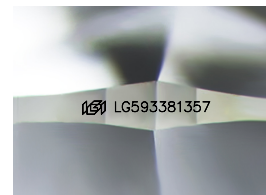
## GRADING SCALES

## CLARITY

IF	VVS <sup>1-2</sup>	VS <sup>1-2</sup>	SI <sup>1-2</sup>	I <sup>1-3</sup>
Internally Flawless	Very Very Slightly Included	Very Slightly Included	Slightly Included	Included

**COLOR**

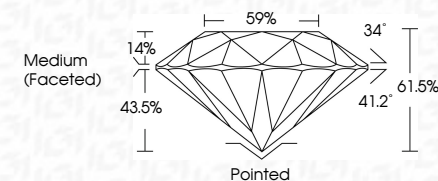
D E F G H I J Faint Very Light Light



Sample Image Used



August 3, 2023	
IGI Report Number	LG593381357
Description	LABORATORY GROWN DIAMOND
Shape and Cutting Style	ROUND BRILLIANT
Measurements	8.15 - 8.23 X 5.03 MM
<b>GRADING RESULTS</b>	
Carat Weight	2.08 CARATS
Color Grade	F
Clarity Grade	VS 1
Cut Grade	IDEAL



### ADDITIONAL GRADING INFORMATION

Polish	EXCELLENT
Symmetry	EXCELLENT
Fluorescence	NONE
Inscription(s)	157 LG593381357

Comments: This Laboratory Grown Diamond was created by Chemical Vapor Deposition (CVD) growth process and may include post-growth treatment.  
Type IIa



© IGI 2020, International Gemological Institute

FD - 10 20

**www.igi.org**

THIS DOCUMENT WAS PRODUCED WITH THE FOLLOWING SECURITY MEASURES: SPECIAL DOCUMENT PAPER, INK SCREENS, WATERMARK, BACKGROUND DESIGNS, HOLOGRAM AND OTHER SECURITY FEATURES NOT LISTED AND DO EXCEED DOCUMENT SECURITY INDUSTRY GUIDELINES

August 3, 2023	Carat Weight	2.08 CARATS
GI Report No. LG59381357	Color Grade	F
ROUND BRILLIANT	Clarity Grade	VS 1
	Cut Grade	IDEAL
	Depth	61.5%
	Table	59%
LS 15- 4.23 X 5.03 MM	Grille	Medium (Faceted)
	Culet	Pointed
	Polish	EXCELLENT
	Symmetry	EXCELLENT
	Fluorescence	NONE
	Inscriptions(s)	469 LG59381357
Comments:	<p>The Laboratory Grown Diamond was created by Chemical Vapor Deposition (CVD) and may include post-growth treatment.</p> <p>Type IIA</p>	