



**INTERNATIONAL  
GEMOLOGICAL  
INSTITUTE**

**ELECTRONIC COPY**

**LABORATORY GROWN  
DIAMOND REPORT**

**LG593394399**

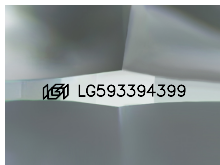
**IGI LABORATORY GROWN  
DIAMOND ID REPORT**

August 7, 2023  
IGI Report Number **LG593394399**  
**ROUND BRILLIANT**  
**4.65 - 4.68 X 2.87 MM**  
Carat Weight 0.38 CARAT  
Color Grade D  
Clarity Grade VVS 2  
Cut Grade IDEAL  
Polish EXCELLENT  
Symmetry EXCELLENT  
Fluorescence NONE  
Inscription(s) LG593394399

**LABORATORY GROWN DIAMOND REPORT**

**IGI LABORATORY GROWN DIAMOND IDENTIFICATION REPORT**

August 7, 2023  
IGI Report Number LG593394399  
Description LABORATORY GROWN DIAMOND  
Shape and Cutting Style ROUND BRILLIANT  
Measurements 4.65 - 4.68 X 2.87 MM



Sample Image Used

**GRADING RESULTS**

Carat Weight 0.38 CARAT  
Color Grade D  
Clarity Grade VVS 2  
Cut Grade IDEAL

**ADDITIONAL GRADING INFORMATION**

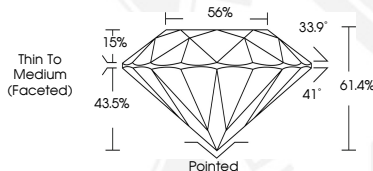
Polish EXCELLENT  
Symmetry EXCELLENT  
Fluorescence NONE  
Inscription(s) LG593394399

Comments: As Grown - No indication of post-growth treatment. This Laboratory Grown Diamond was created by High Pressure High Temperature (HPHT) growth process. Type II

**IGI LABORATORY GROWN  
DIAMOND ID REPORT**

August 7, 2023  
IGI Report Number **LG593394399**  
**ROUND BRILLIANT**  
**4.65 - 4.68 X 2.87 MM**  
Carat Weight 0.38 CARAT  
Color Grade D  
Clarity Grade VVS 2  
Cut Grade IDEAL  
Polish EXCELLENT  
Symmetry EXCELLENT  
Fluorescence NONE  
Inscription(s) LG593394399

Comments: As Grown - No indication of post-growth treatment. This Laboratory Grown Diamond was created by High Pressure High Temperature (HPHT) growth process. Type II



THIS DOCUMENT WAS PRODUCED WITH THE FOLLOWING SECURITY MEASURES: SPECIAL DOCUMENT PAPER, INK SCREENS, WATERMARK, BACKGROUND DESIGN, HOLOGRAM AND OTHER SECURITY FEATURES NOT LISTED AND DO EXCEED DOCUMENT SECURITY INDUSTRY GUIDELINES.

For terms & conditions and to verify this report, please visit [www.igi.org](http://www.igi.org)