



ELECTRONIC COPY

LABORATORY GROWN DIAMOND REPORT

August 25, 2023
 IGI Report Number **LG594313011**
 Description **LABORATORY GROWN
DIAMOND**
 Shape and Cutting Style **CUSHION MODIFIED BRILLIANT**
 Measurements **7.45 X 6.29 X 4.40 MM**

GRADING RESULTS

Carat Weight **1.76 CARAT**
 Color Grade **H**
 Clarity Grade **VS 1**
 Cut Grade **VERY GOOD**

ADDITIONAL GRADING INFORMATION

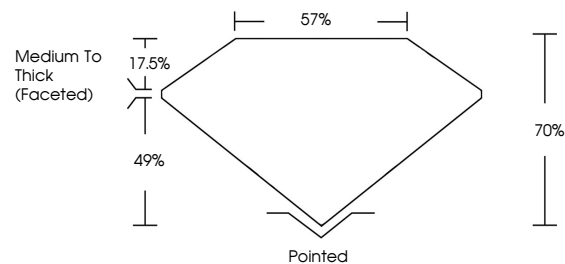
Polish **EXCELLENT**
 Symmetry **VERY GOOD**
 Fluorescence **NONE**
 Inscription(s) **IGI LG594313011**

Comments: This Laboratory Grown Diamond was created by Chemical Vapor Deposition (CVD) growth process and may include post-growth treatment.

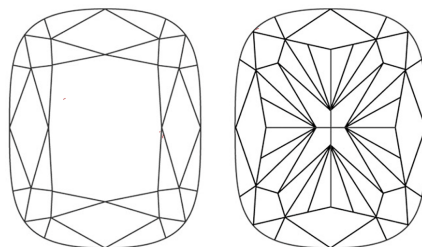
LABORATORY GROWN DIAMOND REPORT

LG594313011
 Report verification at igi.org

PROPORTIONS



CLARITY CHARACTERISTICS



KEY TO SYMBOLS

Red symbols indicate internal characteristics.
 Green symbols indicate external characteristics.

**LABORATORY GROWN
DIAMOND REPORT**

GRADING SCALES

CLARITY

IF	VVS ¹⁻²	VS ¹⁻²	SI ¹⁻²	I ¹⁻³
Internally Flawless	Very Very Slightly Included	Very Slightly Included	Slightly Included	Included

COLOR

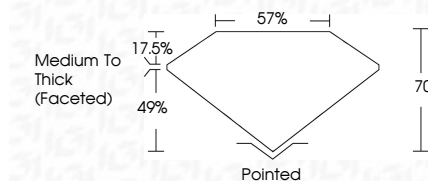
D	E	F	G	H	I	J	Faint	Very Light	Light

LABORATORY GROWN DIAMOND REPORT

August 25, 2023
 IGI Report Number **LG594313011**
 Description **LABORATORY GROWN
DIAMOND**
 Shape and Cutting Style **CUSHION MODIFIED
BRILLIANT**
 Measurements **7.45 X 6.29 X 4.40 MM**

GRADING RESULTS

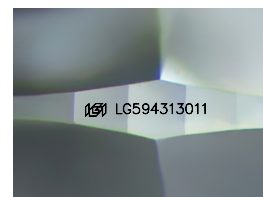
Carat Weight **1.76 CARAT**
 Color Grade **H**
 Clarity Grade **VS 1**
 Cut Grade **VERY GOOD**



ADDITIONAL GRADING INFORMATION

Polish **EXCELLENT**
 Symmetry **VERY GOOD**
 Fluorescence **NONE**
 Inscription(s) **IGI LG594313011**

Comments: This Laboratory Grown Diamond was created by Chemical Vapor Deposition (CVD) growth process and may include post-growth treatment.



Sample Image Used



IGI

August 25, 2023
 IGI Report No **LG594313011**
CUSHION MODIFIED BRILLIANT
 7.45 X 6.29 X 4.40 MM
 1.76 CARAT
 H
 VS 1
 VERY GOOD
 70%
 57%
 Medium To Thick (Faceted)
 Pointed
 EXCELLENT
 VERY GOOD
 NONE
 IGI LG594313011
 Comments: This Laboratory Grown Diamond was created by Chemical Vapor Deposition (CVD) growth process and may include post-growth treatment.