



**INTERNATIONAL  
GEMOLOGICAL  
INSTITUTE**

**LABORATORY GROWN DIAMOND REPORT**

**IGI LABORATORY GROWN DIAMOND IDENTIFICATION REPORT**

September 6, 2023  
 IGI Report Number LG594313715  
 Description LABORATORY GROWN DIAMOND  
 Shape and Cutting Style ROUND BRILLIANT  
 Measurements 6.34 - 6.37 X 4.04 MM

**GRADING RESULTS**

Carat Weight 1.01 CARAT  
 Color Grade E  
 Clarity Grade VVS 2  
 Cut Grade EXCELLENT

**ADDITIONAL GRADING INFORMATION**

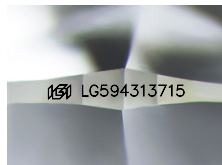
Polish EXCELLENT  
 Symmetry VERY GOOD  
 Fluorescence NONE  
 Inscription(s) IGI LG594313715

Comments: This Laboratory Grown Diamond was created by Chemical Vapor Deposition (CVD) growth process and may include post-growth treatment.

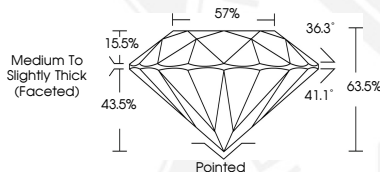
**ELECTRONIC COPY**

**LABORATORY GROWN  
DIAMOND REPORT**

**LG594313715**



Sample Image Used



**IGI LABORATORY GROWN  
DIAMOND ID REPORT**

September 6, 2023  
 IGI Report Number LG594313715  
**ROUND BRILLIANT**  
**6.34 - 6.37 X 4.04 MM**  
 Carat Weight 1.01 CARAT  
 Color Grade E  
 Clarity Grade VVS 2  
 Cut Grade EXCELLENT  
 Polish EXCELLENT  
 Symmetry VERY GOOD  
 Fluorescence NONE  
 Inscription(s) IGI LG594313715

Comments: This Laboratory Grown Diamond was created by Chemical Vapor Deposition (CVD) growth process and may include post-growth treatment.

**IGI LABORATORY GROWN  
DIAMOND ID REPORT**

September 6, 2023  
 IGI Report Number LG594313715  
**ROUND BRILLIANT**  
**6.34 - 6.37 X 4.04 MM**  
 Carat Weight 1.01 CARAT  
 Color Grade E  
 Clarity Grade VVS 2  
 Cut Grade EXCELLENT  
 Polish EXCELLENT  
 Symmetry VERY GOOD  
 Fluorescence NONE  
 Inscription(s) IGI LG594313715

Comments: This Laboratory Grown Diamond was created by Chemical Vapor Deposition (CVD) growth process and may include post-growth treatment.

THIS DOCUMENT WAS PRODUCED WITH THE FOLLOWING SECURITY MEASURES: SPECIAL DOCUMENT PAPER, INK SCREENS, WATERMARK, BACKGROUND DESIGN, HOLOGRAM AND OTHER SECURITY FEATURES NOT LISTED AND DO EXCEED DOCUMENT SECURITY INDUSTRY GUIDELINES.

For terms & conditions and to verify this report, please visit [www.igi.org](http://www.igi.org)