



ELECTRONIC COPY

LG594322401

Report verification at igi.org

LABORATORY GROWN DIAMOND REPORT

August 10, 2023
IGI Report Number **LG594322401**

Description **LABORATORY GROWN
DIAMOND**

Shape and Cutting Style **SQUARE CUSHION BRILLIANT**

Measurements **8.46 X 8.37 X 5.51 MM**

GRADING RESULTS

Carat Weight **3.06 CARATS**

Color Grade **H**

Clarity Grade **VS 1**

ADDITIONAL GRADING INFORMATION

Polish **EXCELLENT**

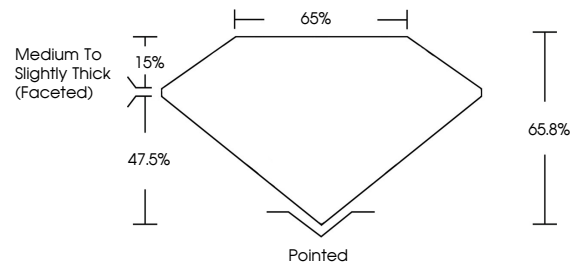
Symmetry **EXCELLENT**

Fluorescence **NONE**

Inscription(s) **IGI LG594322401**

Comments: This Laboratory Grown Diamond was created by Chemical Vapor Deposition (CVD) growth process and may include post-growth treatment. Type IIa

PROPORTIONS



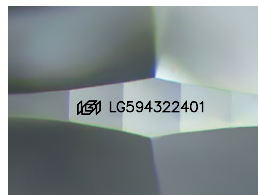
GRADING SCALES

CLARITY

IF	VVS ¹⁻²	VS ¹⁻²	SI ¹⁻²	I ¹⁻³
Internally Flawless	Very Very Slightly Included	Very Slightly Included	Slightly Included	Included

COLOR

D	E	F	G	H	I	J	Faint	Very Light	Light
---	---	---	---	---	---	---	-------	------------	-------



Sample Image Used

August 10, 2023
IGI Report Number **LG594322401**
Description **LABORATORY GROWN
DIAMOND**

Shape and Cutting Style **SQUARE CUSHION BRILLIANT**

Measurements **8.46 X 8.37 X 5.51 MM**

GRADING RESULTS

Carat Weight **3.06 CARATS**

Color Grade **H**

Clarity Grade **VS 1**

ADDITIONAL GRADING INFORMATION

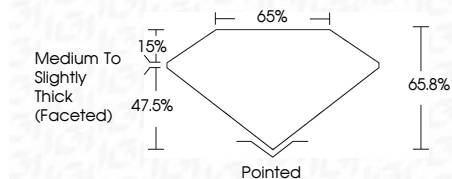
Polish **EXCELLENT**

Symmetry **EXCELLENT**

Fluorescence **NONE**

Inscription(s) **IGI LG594322401**

Comments: This Laboratory Grown Diamond was created by Chemical Vapor Deposition (CVD) growth process and may include post-growth treatment. Type IIa



IGI

August 10, 2023
IGI Report No **LG594322401**
SQUARE CUSHION BRILLIANT
8.46 X 8.37 X 5.51 MM
Carat Weight **3.06 CARATS**
Color Grade **H**
Clarity Grade **VS 1**
Depth **65.8%**
Table **65%**
Girdle **Medium to Slightly Thick (Faceted)**
Culet **Pointed**
Polish **EXCELLENT**
Symmetry **EXCELLENT**
Fluorescence **NONE**
Inscription(s) **IGI LG594322401**
Comments: This Laboratory Grown Diamond was created by Chemical Vapor Deposition (CVD) growth process and may include post-growth treatment. Type IIa