



ELECTRONIC COPY

LABORATORY GROWN DIAMOND REPORT

October 5, 2023	
IGI Report Number	LG595304948
Description	LABORATORY GROWN DIAMOND
Shape and Cutting Style	ROUND BRILLIANT
Measurements	5.81 - 5.84 X 3.48 MM

GRADING RESULTS

Carat Weight	0.72 CARAT
Color Grade	D
Clarity Grade	VS 1
Cut Grade	EXCELLENT

ADDITIONAL GRADING INFORMATION

Polish	EXCELLENT
Symmetry	EXCELLENT
Fluorescence	NONE
Inscription(s)	 LG595304948

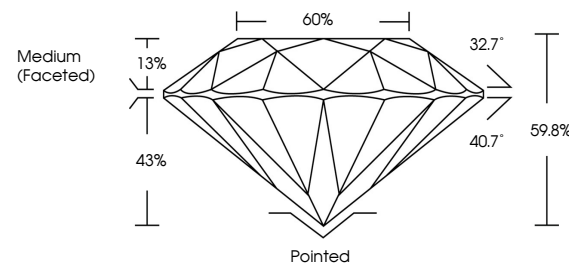
Comments: As Grown - No indication of post-growth treatment.
This Laboratory Grown Diamond was created by High Pressure High Temperature (HPHT) growth process.
Type II

LABORATORY GROWN DIAMOND REPORT

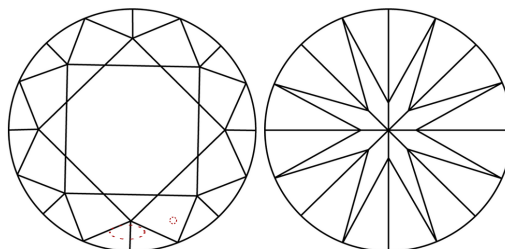
LG595304948

Report verification at igi.org

PROPORTIONS



CLARITY CHARACTERISTICS



KEY TO SYMBOLS

Red symbols indicate internal characteristics.
Green symbols indicate external characteristics.

LABORATORY GROWN
DIAMOND REPORT

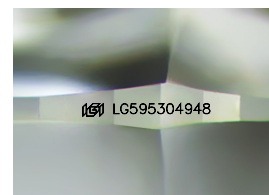
GRADING SCALES

CLARITY

IF	VVS ¹⁻²	VS ¹⁻²	SI ¹⁻²	I ¹⁻³
Internally Flawless	Very Very Slightly Included	Very Slightly Included	Slightly Included	Included

COLOR

D E F G H I J Faint Very Light Light



Sample Image Used



© IGI 2020, International Gemological Institute

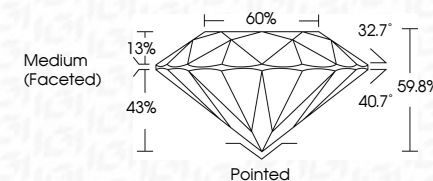
FD - 10 20

www.igi.org


LABORATORY GROWN DIAMOND REPORT

October 5, 2023	
IGI Report Number	LG595304948
Description	LABORATORY GROWN DIAMOND
Shape and Cutting Style	ROUND BRILLIANT
Measurements	5.81 - 5.84 X 3.48 MM

Carat Weight	0.72 CARAT
Color Grade	D
Clarity Grade	VS 1
Cut Grade	EXCELLENT



ADDITIONAL GRADING INFORMATION

Polish	EXCELLENT
Symmetry	EXCELLENT
Fluorescence	NONE
Inscription(s)	 LG595304948
Comments: As Grown - No indication of post-growth treatment.	
This Laboratory Grown Diamond was created by High Pressure High Temperature (HPHT) growth process.	
Type II	



October 5, 2023	0.72 CARAT	
GI Report No LG59504948	D	
ROUND BRILLIANT	VS 1	
	EXCELLENT	
	59.6% 60%	
	Medium (Faceted)	
		Pointed EXCELLENT EXCELLENT NONE
		169 LG59504948
3.81 - 5.84 X 3.48 MM		
Carat Weight		
Color Grade		
	Color Grade	
	Cut Grade	
Depth		
Table		
Girdle		
	Quiet	
	Polish	
	Symmetry	
	Fluorescence	
	Inscription(s)	
Comments:	No indication of post-growth treatment.	
	This Laboratory Growth Diamond was created by High Pressure High temperature (HPHT) growth process.	
	Type II	