

ELECTRONIC COPY

LABORATORY GROWN DIAMOND REPORT

August 15, 2023	
IGI Report Number	LG595387743
Description	LABORATORY GROWN DIAMOND
Shape and Cutting Style	CUT CORNERED RECTANGULAR MODIFIED BRILLIANT
Measurements	9.01 X 6.26 X 4.39 MM

GRADING RESULTS

Carat Weight	2.25 CARATS
Color Grade	G
Clarity Grade	VVS 2

ADDITIONAL GRADING INFORMATION

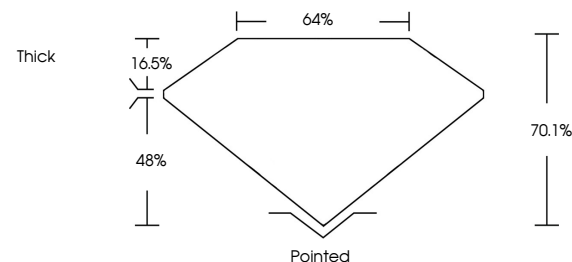
Polish	EXCELLENT
Symmetry	EXCELLENT
Fluorescence	NONE
Inscription(s)	15 LG595387743

Comments: This Laboratory Grown Diamond was created by Chemical Vapor Deposition (CVD) growth process and may include post-growth treatment.
Type IIa

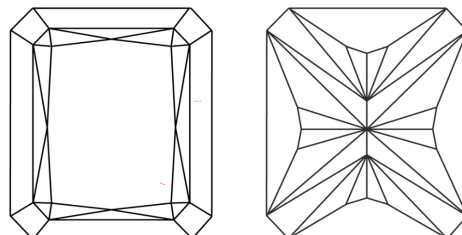
LABORATORY GROWN DIAMOND REPORT

LG595387743
Report verification at igi.org

PROPORTIONS



CLARITY CHARACTERISTICS



KEY TO SYMBOLS

Red symbols indicate internal characteristics.
Green symbols indicate external characteristics.

LABORATORY GROWN
DIAMOND REPORT

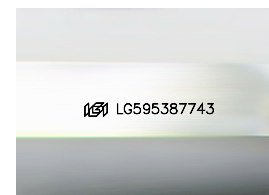
GRADING SCALES

CLARITY

IF	VVS ¹⁻²	VS ¹⁻²	SI ¹⁻²	I ¹⁻³
Internally Flawless	Very Very Slightly Included	Very Slightly Included	Slightly Included	Included

COLOR

D E F G H I J Faint Very Light Light



Sample Image Used

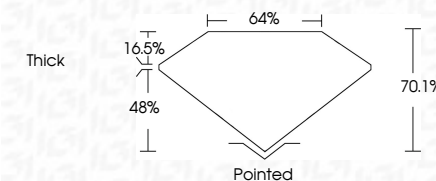


© IGI 2020, International Gemological Institute

FD - 10 20



August 15, 2023	
IGI Report Number	LG595387743
Description	LABORATORY GROWN DIAMOND
Shape and Cutting Style	CUT CORNERED RECTANGULAR MODIFIED BRILLIANT
Measurements	9.01 X 6.26 X 4.39 MM
GRADING RESULTS	
Carat Weight	2.25 CARATS
Color Grade	G
Clarity Grade	VVS 2



ADDITIONAL GRADING INFORMATION

Polish	EXCELLENT
Symmetry	EXCELLENT
Fluorescence	NONE
Inscription(s)	LG5953 LG595387743
<p>Comments: This Laboratory Grown Diamond was created by Chemical Vapor Deposition (CVD) growth process and may include post-growth treatment.</p> <p>Type IIa</p>	

August 15, 2023	GI Report No. LG96938743	2.25 CARATS	G	VVS 2	70.1%	04%	Thick	Pointed	EXCELLENT	EXCELLENT	NONE	681 LG96938743	<p>Comments:</p> <p>This is a very fine, colorless, diamond was created by Chemical Vapor Deposition (CVD) growth process and may include post-growth treatment.</p> <p>Type IIa</p>
	GI CUT CORNERED RECT. MODIFIED BRILLIANT	0.017 X 0.25 X 0.39 MM	Color: White	Clarity: Grade	Depth: 70.1%	Table: 04%	Girdle: Thick	Culet: Pointed	Polish: EXCELLENT	Symmetry: EXCELLENT	Fluorescence: NONE	Inscriptions(s): 681 LG96938743	

Comments:
This Laboratory Grown Diamond was created by Chemical Vapor Deposition (CVD) growth process and may include post-growth treatment.