



ELECTRONIC COPY

LABORATORY GROWN DIAMOND REPORT

August 16, 2023
 IGI Report Number **LG595392591**
 Description **LABORATORY GROWN
DIAMOND**
 Shape and Cutting Style **CUSHION BRILLIANT**
 Measurements **7.99 X 5.64 X 3.80 MM**

GRADING RESULTS

Carat Weight **1.31 CARAT**
 Color Grade **G**
 Clarity Grade **VS 2**

ADDITIONAL GRADING INFORMATION

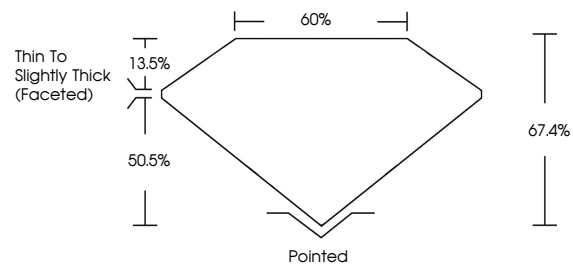
Polish **EXCELLENT**
 Symmetry **EXCELLENT**
 Fluorescence **NONE**
 Inscription(s) **IGI LG595392591**

Comments: This Laboratory Grown Diamond was created by Chemical Vapor Deposition (CVD) growth process and may include post-growth treatment. Type IIa

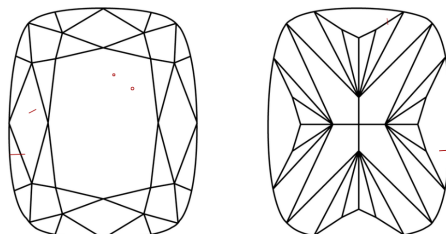
LABORATORY GROWN DIAMOND REPORT

LG595392591
 Report verification at igi.org

PROPORTIONS



CLARITY CHARACTERISTICS



KEY TO SYMBOLS

Red symbols indicate internal characteristics.
 Green symbols indicate external characteristics.

**LABORATORY GROWN
DIAMOND REPORT**

GRADING SCALES

CLARITY

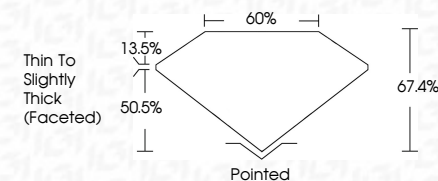
IF	VVS ¹⁻²	VS ¹⁻²	SI ¹⁻²	I ¹⁻³
Internally Flawless	Very Very Slightly Included	Very Slightly Included	Slightly Included	Included

COLOR

D	E	F	G	H	I	J	Faint	Very Light	Light
---	---	---	---	---	---	---	-------	------------	-------

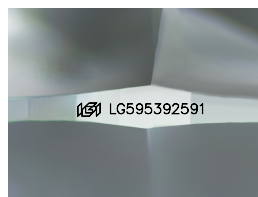
LABORATORY GROWN DIAMOND REPORT

August 16, 2023
 IGI Report Number **LG595392591**
 Description **LABORATORY GROWN
DIAMOND**
 Shape and Cutting Style **CUSHION BRILLIANT**
 Measurements **7.99 X 5.64 X 3.80 MM**
GRADING RESULTS
 Carat Weight **1.31 CARAT**
 Color Grade **G**
 Clarity Grade **VS 2**



ADDITIONAL GRADING INFORMATION

Polish **EXCELLENT**
 Symmetry **EXCELLENT**
 Fluorescence **NONE**
 Inscription(s) **IGI LG595392591**
 Comments: This Laboratory Grown Diamond was created by Chemical Vapor Deposition (CVD) growth process and may include post-growth treatment. Type IIa



Sample Image Used



IGI

August 16, 2023
 IGI Report No **LG595392591**
CUSHION BRILLIANT
 7.99 X 5.64 X 3.80 MM
 Carat Weight **1.31 CARAT**
 Color Grade **G**
 Clarity Grade **VS 2**
 Depth **67.4%**
 Table **60%**
 Girdle **Thin To Slightly Thick (Faceted)**
 Culet **Pointed**
 Polish **EXCELLENT**
 Symmetry **EXCELLENT**
 Fluorescence **NONE**
 Inscription(s) **IGI LG595392591**

Comments: This Laboratory Grown Diamond was created by Chemical Vapor Deposition (CVD) growth process and may include post-growth treatment. Type IIa