



LABORATORY GROWN DIAMOND REPORT

GRADING RESULTS

ADDITIONAL GRADING INFORMATION

Comments: This Laboratory Grown Diamond was created by Chemical Vapor Deposition (CVD) growth process and may include post-growth treatment.
Type IIa

LG595394087
Report verification at [igi.org](https://www.igi.org)

Diagram illustrating the cross-section of a diamond-shaped structure. The dimensions are given as percentages of the total width (60%). The top thickness is 15%, the bottom thickness is 43%, and the overall height is 62.8%. The structure is labeled "Slightly Thick (Faceted)" and "Pointed".

Red symbols indicate internal characteristics.
Green symbols indicate external characteristics.

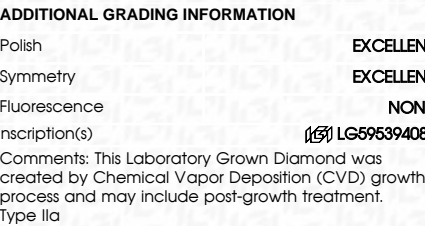
D	E	F	G	H	I	J	Faint	Very Light	Light
---	---	---	---	---	---	---	-------	------------	-------



FD - 10 20

www.igi.org

GRADING RESULTS	
Carat Weight	3.68 CARATS
Color Grade	F
Clarity Grade	VS 1
Cut Grade	EXCELLENT



August 21, 2023	IGL Report No. LG95934087	3.68 CARATS	F	VSI	60%	Slightly Thick (Faceted)	Pointed	EXCELLENT	EXCELLENT	NONE	IGL LG95934087	<p>Comments:</p> <p>The Laboratory Grown Diamond was created by Chemical Vapor Deposition (CVD) and may include post-growth treatment.</p> <p>Type Ia</p>
12.76 X 8.85 X 5.37 MM	Color Grade	Clarity Grade	Cut Grade	Depth	Table	Graile	Symmetry	Fluorescence	Inscriptions(s)			