



ELECTRONIC COPY

LABORATORY GROWN DIAMOND REPORT

August 21, 2023
 IGI Report Number **LG596309481**
 Description **LABORATORY GROWN
DIAMOND**
 Shape and Cutting Style **ROUND BRILLIANT**
 Measurements **8.46 - 8.51 X 5.25 MM**
GRADING RESULTS
 Carat Weight **2.32 CARATS**
 Color Grade **G**
 Clarity Grade **VS 1**
 Cut Grade **IDEAL**

ADDITIONAL GRADING INFORMATION

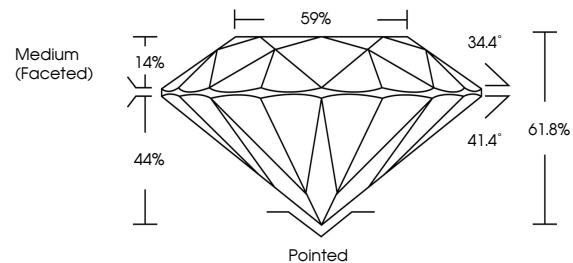
Polish **EXCELLENT**
 Symmetry **EXCELLENT**
 Fluorescence **NONE**
 Inscription(s) **LG596309481**

Comments: This Laboratory Grown Diamond was created by Chemical Vapor Deposition (CVD) growth process and may include post-growth treatment. Type IIa

LABORATORY GROWN DIAMOND REPORT

LG596309481
 Report verification at igi.org

PROPORTIONS



**LABORATORY GROWN
DIAMOND REPORT**

LABORATORY GROWN DIAMOND REPORT

GRADING SCALES

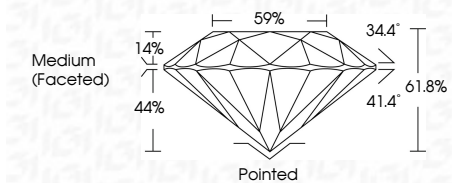
CLARITY

IF	VVS ¹⁻²	VS ¹⁻²	SI ¹⁻²	I ¹⁻³
Internally Flawless	Very Very Slightly Included	Very Slightly Included	Slightly Included	Included

COLOR

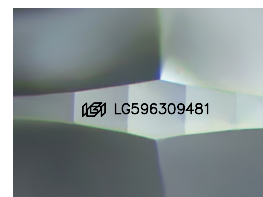
D	E	F	G	H	I	J	Faint	Very Light	Light
---	---	---	---	---	---	---	-------	------------	-------

August 21, 2023
 IGI Report Number **LG596309481**
 Description **LABORATORY GROWN
DIAMOND**
 Shape and Cutting Style **ROUND BRILLIANT**
 Measurements **8.46 - 8.51 X 5.25 MM**
GRADING RESULTS
 Carat Weight **2.32 CARATS**
 Color Grade **G**
 Clarity Grade **VS 1**
 Cut Grade **IDEAL**



ADDITIONAL GRADING INFORMATION

Polish **EXCELLENT**
 Symmetry **EXCELLENT**
 Fluorescence **NONE**
 Inscription(s) **LG596309481**
 Comments: This Laboratory Grown Diamond was created by Chemical Vapor Deposition (CVD) growth process and may include post-growth treatment. Type IIa



Sample Image Used



August 21, 2023	IGI Report No LG596309481	2.32 CARATS	G	VS 1	IDEAL	61.8%	59%	Medium (Faceted)	Pointed	EXCELLENT	EXCELLENT	NONE	LG596309481								
Carat Weight	8.46 - 8.51 X 5.25 MM	Color Grade	VS 1	Cut Grade	IDEAL	Depth	61.8%	Table	59%	Girdle	Medium (Faceted)	Culet	Pointed	Polish	EXCELLENT	Symmetry	EXCELLENT	Fluorescence	NONE	Inscription(s)	LG596309481

Comments: This Laboratory Grown Diamond was created by Chemical Vapor Deposition (CVD) growth process and may include post-growth treatment. Type IIa