



**INTERNATIONAL  
GEMOLOGICAL  
INSTITUTE**

**ELECTRONIC COPY**

**LABORATORY GROWN  
DIAMOND REPORT**

**LG596311439**

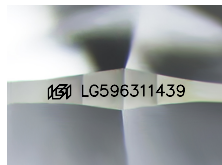
**IGI LABORATORY GROWN  
DIAMOND ID REPORT**

August 30, 2023  
IGI Report Number **LG596311439**  
**ROUND BRILLIANT**  
**6.92 - 6.97 X 4.38 MM**  
Carat Weight 1.31 CARAT  
Color Grade F  
Clarity Grade VVS 2  
Cuf Grade EXCELLENT  
Polish EXCELLENT  
Symmetry EXCELLENT  
Fluorescence NONE  
Inscription(s) LG596311439

**LABORATORY GROWN DIAMOND REPORT**

**IGI LABORATORY GROWN DIAMOND IDENTIFICATION REPORT**

August 30, 2023  
IGI Report Number LG596311439  
Description LABORATORY GROWN DIAMOND  
Shape and Cutting Style ROUND BRILLIANT  
Measurements 6.92 - 6.97 X 4.38 MM



Sample Image Used

**GRADING RESULTS**

Carat Weight 1.31 CARAT  
Color Grade F  
Clarity Grade VVS 2  
Cut Grade EXCELLENT

**ADDITIONAL GRADING INFORMATION**

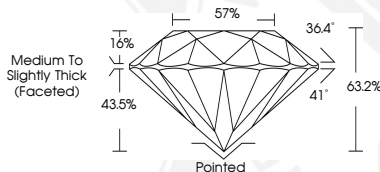
Polish EXCELLENT  
Symmetry EXCELLENT  
Fluorescence NONE  
Inscription(s) LG596311439

Comments: This Laboratory Grown Diamond was created by Chemical Vapor Deposition (CVD) growth process and may include post-growth treatment.

**IGI LABORATORY GROWN  
DIAMOND ID REPORT**

August 30, 2023  
IGI Report Number **LG596311439**  
**ROUND BRILLIANT**  
**6.92 - 6.97 X 4.38 MM**  
Carat Weight 1.31 CARAT  
Color Grade F  
Clarity Grade VVS 2  
Cuf Grade EXCELLENT  
Polish EXCELLENT  
Symmetry EXCELLENT  
Fluorescence NONE  
Inscription(s) LG596311439

Comments: This Laboratory Grown Diamond was created by Chemical Vapor Deposition (CVD) growth process and may include post-growth treatment.



THIS DOCUMENT WAS PRODUCED WITH THE FOLLOWING SECURITY MEASURES: SPECIAL DOCUMENT PAPER, INK SCREENS, WATERMARK, BACKGROUND DESIGN, HOLOGRAM AND OTHER SECURITY FEATURES NOT LISTED AND DO EXCEED DOCUMENT SECURITY INDUSTRY GUIDELINES.

For terms & conditions and to verify this report, please visit [www.igi.org](http://www.igi.org)