



ELECTRONIC COPY

LABORATORY GROWN DIAMOND REPORT

August 25, 2023	
IGI Report Number	LG596330552
Description	LABORATORY GROWN DIAMOND
Shape and Cutting Style	ROUND BRILLIANT
Measurements	6.37 - 6.41 X 3.96 MM

GRADING RESULTS

Carat Weight	1.01 CARAT
Color Grade	E
Clarity Grade	VVS 2
Cut Grade	IDEAL

ADDITIONAL GRADING INFORMATION

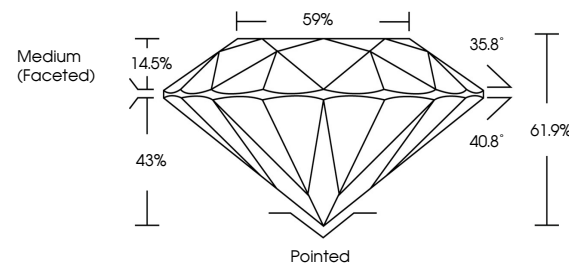
Polish	EXCELLENT
Symmetry	EXCELLENT
Fluorescence	NONE
Inscription(s)	 LG596330552

Comments: As Grown - No indication of post-growth treatment.
This Laboratory Grown Diamond was created by High Pressure High Temperature (HPHT) growth process.
Type II

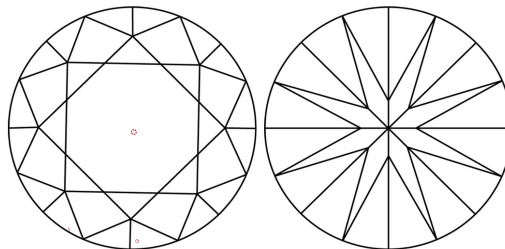
LABORATORY GROWN DIAMOND REPORT

LG596330552
Report verification at igi.org

PROPORTIONS



CLARITY CHARACTERISTICS



KEY TO SYMBOLS

Red symbols indicate internal characteristics.
Green symbols indicate external characteristics.

LABORATORY GROWN
DIAMOND REPORT

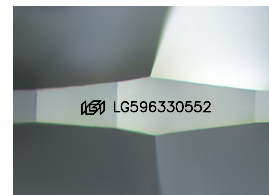
GRADING SCALES

CLARITY

IF	VVS ¹⁻²	VS ¹⁻²	SI ¹⁻²	I ¹⁻³
Internally Flawless	Very Very Slightly Included	Very Slightly Included	Slightly Included	Included

COLOR

D E F G H I J Faint Very Light Light



Sample Image Used



© IGI 2020, International Gemological Institute

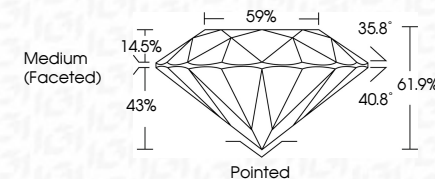
FD - 10 20

www.igi.org

LABORATORY GROWN DIAMOND REPORT

August 25, 2023	
IGI Report Number	LG596330552
Description	LABORATORY GROWN DIAMOND
Shape and Cutting Style	ROUND BRILLIANT
Measurements	6.37 - 6.41 X 3.96 MM

Carat Weight	1.01 CARAT
Color Grade	E
Clarity Grade	VVS 2
Cut Grade	IDEAL



ADDITIONAL GRADING INFORMATION

Polish	EXCELLENT
Symmetry	EXCELLENT
Fluorescence	NONE
Inscription(s)	(G) LG596330552
Comments: As Grown - No indication of post-growth treatment.	
This Laboratory Grown Diamond was created by High Pressure High Temperature (HPHT) growth process.	
Type II	



IG

August 25, 2023	1.01 CARAT
GI Report No LG95430552	E
ROUND BRILLIANT	VVS 2
3.37 - 6.41 X 3.94 MM	IDEAL
Color Weight	61.7%
Color Grade	59%
Clarity Grade	Medium (Focaled)
Cut Grade	Polished
Depth	EXCELLENT
Table	EXCELLENT
Girdle	NONE
	49 LG95430552
Comments:	
No indication of post-growth treatment.	
The Laboratory Grown Diamond was created by High Pressure High Temperature (HPHT) growth process.	
Type II	