



LABORATORY GROWN DIAMOND REPORT

August 24, 2023	
IGI Report Number	LG596337631
Description	LABORATORY GROWN DIAMOND
Shape and Cutting Style	CUT CORNERED RECTANGULAR MODIFIED BRILLIANT
Measurements	8.88 X 6.42 X 4.39 MM

ADDITIONAL GRADING INFORMATION

Polish	EXCELLENT
Symmetry	EXCELLENT
Fluorescence	NONE
Inscription(s)	15 LG596337631

Comments: This Laboratory Grown Diamond was created by Chemical Vapor Deposition (CVD) growth process and may include post-growth treatment.
Type IIa

LABORATORY GROWN DIAMOND REPORT

LG596337631

Report verification at [igi.org](https://www.igi.org)

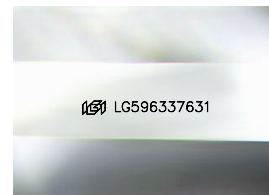
PROPORTIONS

CLARITY CHARACTERISTICS

KEY TO SYMBOLS

CLARITY

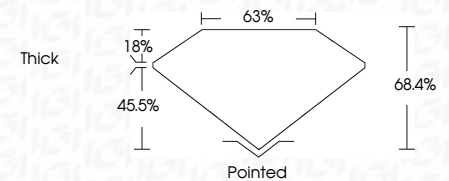
COLOR



© IGI 2020, International Gemological Institute

www.igi.org

August 24, 2023	
IGI Report Number	LG596337631
Description	LABORATORY GROWN DIAMOND
Shape and Cutting Style	CUT CORNERED RECTANGULAR MODIFIED BRILLIANT
Measurements	8.88 X 6.42 X 4.39 MM
GRADING RESULTS	
Carat Weight	2.27 CARATS
Color Grade	E
Clarity Grade	VVS 2



Polish	EXCELLENT
Symmetry	EXCELLENT
Fluorescence	NONE
Inscription(s)	LG5 LG596337631
<p>Comments: This Laboratory Grown Diamond was created by Chemical Vapor Deposition (CVD) growth process and may include post-growth treatment.</p> <p>Type IIa</p>	



August 24, 2023	GI Report No. LG96337631	2.27 CARATS
Color Weight	Color Grade	E
8.89 X 6.42 X 4.39 MM	Clarity Grade	VVS 2
	Depth	68.4%
	Table	63%
	Girdle	Thick
Culet		Painted
Polish		EXCELLENT
Symmetry		EXCELLENT
Fluorescence		NONE
Inscription(s)		LG96337631

Comments:
 This Laboratory Grown Diamond was created by Chemical Vapor Deposition (CVD) growth process and may include post-growth treatment.
 Type IIa

Comments:
This Laboratory Grown Diamond was created by Chemical Vapor Deposition (CVD) growth process and may include post-growth treatment.
Type IIa