



ELECTRONIC COPY

LABORATORY GROWN DIAMOND REPORT

August 25, 2023
 IGI Report Number **LG597362165**
 Description **LABORATORY GROWN
DIAMOND**
 Shape and Cutting Style **CUT CORNERED RECTANGULAR
MODIFIED BRILLIANT**
 Measurements **11.48 X 7.75 X 5.39 MM**

GRADING RESULTS

Carat Weight **4.33 CARATS**
 Color Grade **H**
 Clarity Grade **VS 1**

ADDITIONAL GRADING INFORMATION

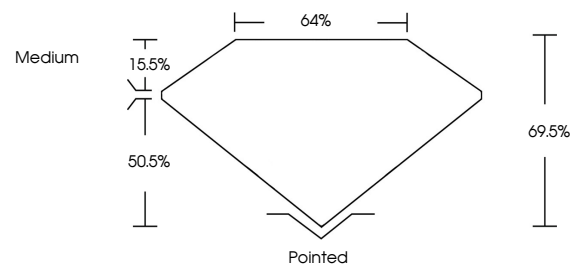
Polish **EXCELLENT**
 Symmetry **EXCELLENT**
 Fluorescence **NONE**
 Inscription(s) **IGI LG597362165**

Comments: This Laboratory Grown Diamond was created by Chemical Vapor Deposition (CVD) growth process and may include post-growth treatment. Type IIa

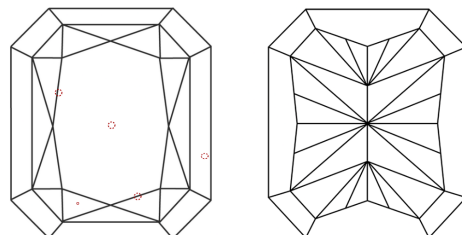
LABORATORY GROWN DIAMOND REPORT

LG597362165
 Report verification at igi.org

PROPORTIONS



CLARITY CHARACTERISTICS



KEY TO SYMBOLS

Red symbols indicate internal characteristics.
 Green symbols indicate external characteristics.

**LABORATORY GROWN
DIAMOND REPORT**

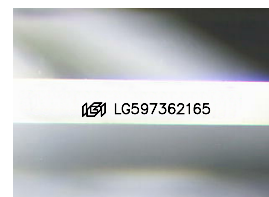
GRADING SCALES

CLARITY

IF	VVS ¹⁻²	VS ¹⁻²	SI ¹⁻²	I ¹⁻³
Internally Flawless	Very Very Slightly Included	Very Slightly Included	Slightly Included	Included

COLOR

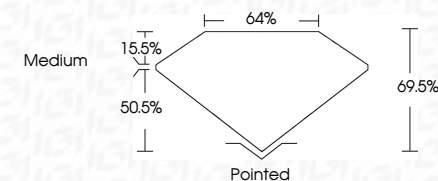
D	E	F	G	H	I	J	Faint	Very Light	Light
---	---	---	---	---	---	---	-------	------------	-------



Sample Image Used

LABORATORY GROWN DIAMOND REPORT

August 25, 2023
 IGI Report Number **LG597362165**
 Description **LABORATORY GROWN
DIAMOND**
 Shape and Cutting Style **CUT CORNERED
RECTANGULAR MODIFIED
BRILLIANT**
 Measurements **11.48 X 7.75 X 5.39 MM**
GRADING RESULTS
 Carat Weight **4.33 CARATS**
 Color Grade **H**
 Clarity Grade **VS 1**



ADDITIONAL GRADING INFORMATION

Polish **EXCELLENT**
 Symmetry **EXCELLENT**
 Fluorescence **NONE**
 Inscription(s) **IGI LG597362165**
 Comments: This Laboratory Grown Diamond was created by Chemical Vapor Deposition (CVD) growth process and may include post-growth treatment. Type IIa



IGI



August 25, 2023
 IGI Report No LG597362165
CUT CORNERED RECT. MODIFIED BRILLIANT
4.33 CARATS
 Carat Weight **H**
 Color Grade **VS 1**
 Depth **69.5%**
 Table **50.5%**
 Girdle **Medium**
 Culet **Pointed**
 Polish **EXCELLENT**
 Symmetry **EXCELLENT**
 Fluorescence **NONE**
 Inscription(s) **IGI LG597362165**

Comments: This Laboratory Grown Diamond was created by Chemical Vapor Deposition (CVD) growth process and may include post-growth treatment. Type IIa