



**INTERNATIONAL  
GEMOLOGICAL  
INSTITUTE**

**ELECTRONIC COPY**

## LABORATORY GROWN DIAMOND REPORT

August 28, 2023	
IGI Report Number	LG597377544
Description	LABORATORY GROWN DIAMOND
Shape and Cutting Style	OVAL BRILLIANT
Measurements	9.99 X 7.20 X 4.44 MM

## GRADING RESULTS

Carat Weight	2.02 CARATS
Color Grade	E
Clarity Grade	VS 1

### ADDITIONAL GRADING INFORMATION

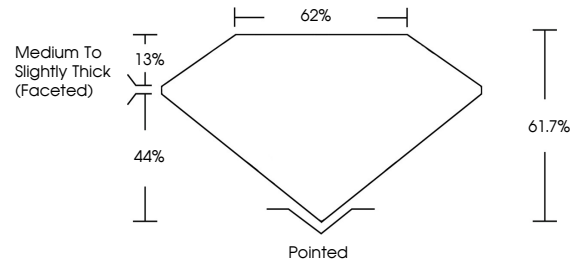
Polish	EXCELLENT
Symmetry	EXCELLENT
Fluorescence	NONE
Inscription(s)	 LG597377544

Comments: This Laboratory Grown Diamond was created by Chemical Vapor Deposition (CVD) growth process and may include post-growth treatment.  
Type IIa

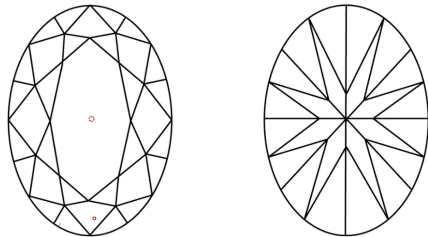
## LABORATORY GROWN DIAMOND REPORT

LG597377544  
Report verification at [igi.org](https://igi.org)

## PROPORTIONS



## CLARITY CHARACTERISTICS



## KEY TO SYMBOLS

Red symbols indicate internal characteristics.  
Green symbols indicate external characteristics.

LABORATORY GROWN  
DIAMOND REPORT

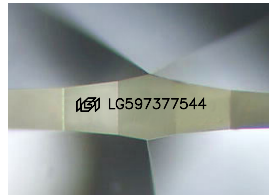
## GRADING SCALES

## CLARITY

IF	VVS <sup>1-2</sup>	VS <sup>1-2</sup>	SI <sup>1-2</sup>	I <sup>1-3</sup>
Internally Flawless	Very Very Slightly Included	Very Slightly Included	Slightly Included	Included

**COLOR**

D E F G H I J Faint Very Light Light



Sample Image Used

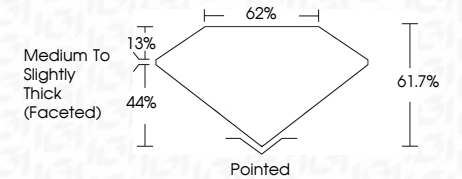


© IGI 2020, International Gemological Institute

FD - 10 20

## LABORATORY GROWN DIAMOND REPORT

August 28, 2023	
IGI Report Number	LG597377544
Description	LABORATORY GROWN DIAMOND
Shape and Cutting Style	OVAL BRILLIANT
Measurements	9.99 X 7.20 X 4.44 MM
GRADING RESULTS	
Carat Weight	2.02 CARATS
Color Grade	E
Clarity Grade	VS 1



### ADDITIONAL GRADING INFORMATION

Polish	EXCELLENT
Symmetry	EXCELLENT
Fluorescence	NONE
Inscription(s)	<del>1531</del> LG597377544
<p>Comments: This Laboratory Grown Diamond was created by Chemical Vapor Deposition (CVD) growth process and may include post-growth treatment.</p> <p>Type Ila</p>	



IGI

August 28, 2023  
IGI Report No LG597377544  
OVAL BRILLIANT

9.99 X 7.20 X 4.44 MM		2.02 CARATS	
Carat Weight	Color Grade	E	
Clarity Grade	Depth	VS 1	
Table	Grade	61.7%	
Fluorescence		62%	
Inscription(s)		Medium To Slightly Thick (facet=0)	
	Culet	Pointed	
	Polish	EXCELLENT	
	Symmetry	EXCELLENT	
		NONE	
			169156879377644

**Comments:**  
This Laboratory Grown Diamond was created by Chemical Vapor Deposition (CVD) growth process and may include post-growth treatment.  
Type IIa

**www.igi.org**