



ELECTRONIC COPY

LABORATORY GROWN DIAMOND REPORT

LG597396298

Report verification at igi.org

LABORATORY GROWN
DIAMOND REPORT

LABORATORY GROWN DIAMOND REPORT

LABORATORY GROWN DIAMOND REPORT

September 5, 2023
IGI Report Number **LG597396298**

Description **LABORATORY GROWN
DIAMOND**

Shape and Cutting Style **EMERALD CUT**

Measurements **7.05 X 4.93 X 3.29 MM**

GRADING RESULTS

Carat Weight **1.19 CARAT**

Color Grade **I**

Clarity Grade **VVS 2**

ADDITIONAL GRADING INFORMATION

Polish **EXCELLENT**

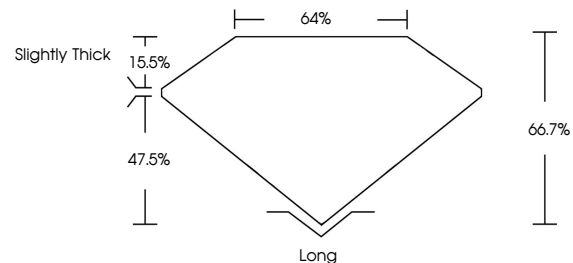
Symmetry **EXCELLENT**

Fluorescence **NONE**

Inscription(s) **IGI LG597396298**

Comments: This Laboratory Grown Diamond was created by Chemical Vapor Deposition (CVD) growth process and may include post-growth treatment. Type IIa

PROPORTIONS



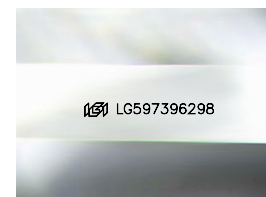
GRADING SCALES

CLARITY

IF	VVS ¹⁻²	VS ¹⁻²	SI ¹⁻²	I ¹⁻³
Internally Flawless	Very Very Slightly Included	Very Slightly Included	Slightly Included	Included

COLOR

D	E	F	G	H	I	J	Faint	Very Light	Light
---	---	---	---	---	---	---	-------	------------	-------



Sample Image Used

September 5, 2023

IGI Report Number **LG597396298**

Description **LABORATORY GROWN
DIAMOND**

Shape and Cutting Style **EMERALD CUT**

Measurements **7.05 X 4.93 X 3.29 MM**

GRADING RESULTS

Carat Weight **1.19 CARAT**

Color Grade **I**

Clarity Grade **VVS 2**

ADDITIONAL GRADING INFORMATION

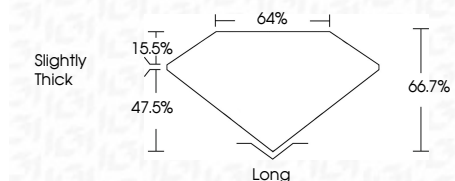
Polish **EXCELLENT**

Symmetry **EXCELLENT**

Fluorescence **NONE**

Inscription(s) **IGI LG597396298**

Comments: This Laboratory Grown Diamond was created by Chemical Vapor Deposition (CVD) growth process and may include post-growth treatment. Type IIa



IGI

September 5, 2023	IGI Report No LG597396298	EMERALD CUT	1.19 CARAT	I	VVS 2	66.7%	64%	Slightly Thick	Long	EXCELLENT	EXCELLENT	NONE	IGI LG597396298
7.05 X 4.93 X 3.29 MM	Carat Weight	Color Grade	Clarity Grade	Table	Depth	Graile	Culet	Polish	Symmetry	Fluorescence	Inscription(s)	Comments: This Laboratory Grown Diamond was created by Chemical Vapor Deposition (CVD) growth process and may include post-growth treatment. Type IIa	