



**INTERNATIONAL  
GEMOLOGICAL  
INSTITUTE**

**LABORATORY GROWN DIAMOND REPORT**

**IGI LABORATORY GROWN DIAMOND IDENTIFICATION REPORT**

September 14, 2023

IGI Report Number **LG598302305**

Description **LABORATORY GROWN DIAMOND**  
Shape and Cutting Style **CUT CORNERED RECTANGULAR MODIFIED  
BRILLIANT**

Measurements **6.94 X 4.48 X 2.82 MM**

**GRADING RESULTS**

Carat Weight **0.77 CARAT**

Color Grade **F**

Clarity Grade **VS 2**

**ADDITIONAL GRADING INFORMATION**

Polish **EXCELLENT**

Symmetry **EXCELLENT**

Fluorescence **NONE**

Inscription(s) **IGI LG598302305**

Comments: This Laboratory Grown Diamond was created by Chemical Vapor Deposition (CVD) growth process and may include post-growth treatment.  
Type Ila

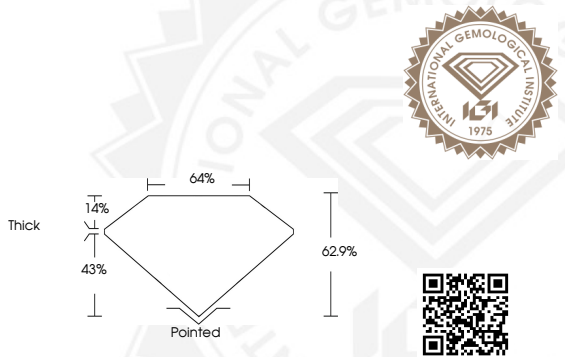
**ELECTRONIC COPY**

**LABORATORY GROWN  
DIAMOND REPORT**

**LG598302305**



Sample Image Used



**IGI LABORATORY GROWN  
DIAMOND ID REPORT**

September 14, 2023

IGI Report Number **LG598302305**

**CUT CORNERED RECTANGULAR  
MODIFIED BRILLIANT**  
**6.94 X 4.48 X 2.82 MM**

Carat Weight **0.77 CARAT**  
Color Grade **F**  
Clarity Grade **VS 2**  
Polish **EXCELLENT**  
Symmetry **EXCELLENT**  
Fluorescence **NONE**  
Inscription(s) **IGI LG598302305**

Comments: This Laboratory Grown Diamond was created by Chemical Vapor Deposition (CVD) growth process and may include post-growth treatment. Type Ila

**IGI LABORATORY GROWN  
DIAMOND ID REPORT**

September 14, 2023

IGI Report Number **LG598302305**

**CUT CORNERED RECTANGULAR  
MODIFIED BRILLIANT**  
**6.94 X 4.48 X 2.82 MM**

Carat Weight **0.77 CARAT**  
Color Grade **F**  
Clarity Grade **VS 2**  
Polish **EXCELLENT**  
Symmetry **EXCELLENT**  
Fluorescence **NONE**  
Inscription(s) **IGI LG598302305**

Comments: This Laboratory Grown Diamond was created by Chemical Vapor Deposition (CVD) growth process and may include post-growth treatment. Type Ila

THIS DOCUMENT WAS PRODUCED WITH THE FOLLOWING SECURITY MEASURES: SPECIAL DOCUMENT PAPER, INK SCREENS, WATERMARK, BACKGROUND DESIGN, HOLOGRAM AND OTHER SECURITY FEATURES NOT LISTED AND DO EXCEED DOCUMENT SECURITY INDUSTRY GUIDELINES.

For terms & conditions and to verify this report, please visit [www.igi.org](http://www.igi.org)