



**INTERNATIONAL
GEMOLOGICAL
INSTITUTE**

ELECTRONIC COPY

**LABORATORY GROWN
DIAMOND REPORT**

LG598330749

**IGI LABORATORY GROWN
DIAMOND ID REPORT**

September 21, 2023
IGI Report Number **LG598330749**
PRINCESS CUT
4.31 X 4.18 X 3.15 MM
Carat Weight 0.50 CARAT
Color Grade FANCY ORANGY BROWN
Clarity Grade VS 2
Polish EXCELLENT
Symmetry EXCELLENT
Fluorescence VERY SLIGHT
Inscription(s) LG598330749

Comments: This Laboratory Grown Diamond was created by Chemical Vapor Deposition (CVD) growth process. Indications of post-growth treatment.

LABORATORY GROWN DIAMOND REPORT

IGI LABORATORY GROWN DIAMOND IDENTIFICATION REPORT

September 21, 2023
IGI Report Number LG598330749
Description LABORATORY GROWN DIAMOND
Shape and Cutting Style PRINCESS CUT
Measurements 4.31 X 4.18 X 3.15 MM

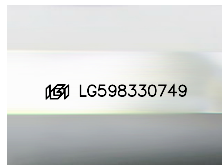
GRADING RESULTS

Carat Weight 0.50 CARAT
Color Grade FANCY ORANGY BROWN
Clarity Grade VS 2

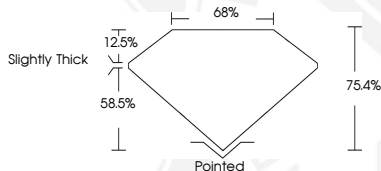
ADDITIONAL GRADING INFORMATION

Polish EXCELLENT
Symmetry EXCELLENT
Fluorescence VERY SLIGHT
Inscription(s) LG598330749

Comments: This Laboratory Grown Diamond was created by Chemical Vapor Deposition (CVD) growth process. Indications of post-growth treatment.



Sample Image Used



**IGI LABORATORY GROWN
DIAMOND ID REPORT**

September 21, 2023
IGI Report Number **LG598330749**
PRINCESS CUT
4.31 X 4.18 X 3.15 MM
Carat Weight 0.50 CARAT
Color Grade FANCY ORANGY BROWN
Clarity Grade VS 2
Polish EXCELLENT
Symmetry EXCELLENT
Fluorescence VERY SLIGHT
Inscription(s) LG598330749

Comments: This Laboratory Grown Diamond was created by Chemical Vapor Deposition (CVD) growth process. Indications of post-growth treatment.



THIS DOCUMENT WAS PRODUCED WITH THE FOLLOWING SECURITY MEASURES: SPECIAL DOCUMENT PAPER, INK SCREENS, WATERMARK, BACKGROUND DESIGN, HOLOGRAM AND OTHER SECURITY FEATURES NOT LISTED AND DO EXCEED DOCUMENT SECURITY INDUSTRY GUIDELINES.

For terms & conditions and to verify this report, please visit www.igi.org