



ELECTRONIC COPY

LG598334627

Report verification at igi.org

LABORATORY GROWN DIAMOND REPORT

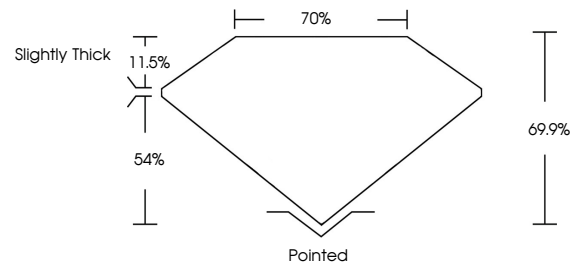
September 4, 2023
 IGI Report Number **LG598334627**
 Description **LABORATORY GROWN
DIAMOND**
 Shape and Cutting Style **PRINCESS CUT**
 Measurements **11.04 X 10.84 X 7.58 MM**
GRADING RESULTS
 Carat Weight **8.30 CARATS**
 Color Grade **G**
 Clarity Grade **VS 2**

ADDITIONAL GRADING INFORMATION

Polish **EXCELLENT**
 Symmetry **EXCELLENT**
 Fluorescence **NONE**
 Inscription(s) **IGI LG598334627**

Comments: This Laboratory Grown Diamond was created by Chemical Vapor Deposition (CVD) growth process and may include post-growth treatment. Type IIa

PROPORTIONS



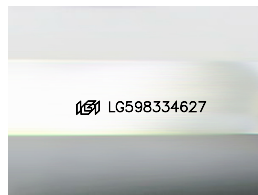
GRADING SCALES

CLARITY

IF	VVS ¹⁻²	VS ¹⁻²	SI ¹⁻²	I ¹⁻³
Internally Flawless	Very Very Slightly Included	Very Slightly Included	Slightly Included	Included

COLOR

D	E	F	G	H	I	J	Faint	Very Light	Light
---	---	---	---	---	---	---	-------	------------	-------



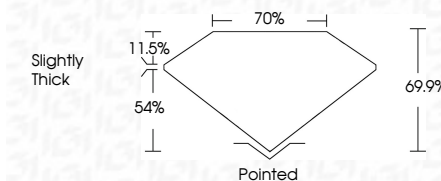
Sample Image Used

September 4, 2023
 IGI Report Number **LG598334627**
 Description **LABORATORY GROWN
DIAMOND**
 Shape and Cutting Style **PRINCESS CUT**
 Measurements **11.04 X 10.84 X 7.58 MM**
GRADING RESULTS
 Carat Weight **8.30 CARATS**
 Color Grade **G**
 Clarity Grade **VS 2**

ADDITIONAL GRADING INFORMATION

Polish **EXCELLENT**
 Symmetry **EXCELLENT**
 Fluorescence **NONE**
 Inscription(s) **IGI LG598334627**

Comments: This Laboratory Grown Diamond was created by Chemical Vapor Deposition (CVD) growth process and may include post-growth treatment. Type IIa



IGI

September 4, 2023
 IGI Report No. LG598334627
PRINCESS CUT
 11.04 X 10.84 X 7.58 MM
 Carat Weight **8.30 CARATS**
 Color Grade **G**
 Clarity Grade **VS 2**
 Table **69.9%**
 Girdle **70%**
 Culet **Slightly Thick**
 Polish **Excellent**
 Symmetry **Excellent**
 Fluorescence **NONE**
 Inscription(s) **IGI LG598334627**

Comments: This Laboratory Grown Diamond was created by Chemical Vapor Deposition (CVD) growth process and may include post-growth treatment. Type IIa