

**ELECTRONIC COPY**

## LABORATORY GROWN DIAMOND REPORT

September 9, 2023	
IGI Report Number	LG598335724
Description	LABORATORY GROWN DIAMOND
Shape and Cutting Style	ROUND BRILLIANT
Measurements	7.70 - 7.72 X 4.80 MM

## GRADING RESULTS

Carat Weight	1.77 CARAT
Color Grade	G
Clarity Grade	VS 1
Cut Grade	IDEAL

### ADDITIONAL GRADING INFORMATION

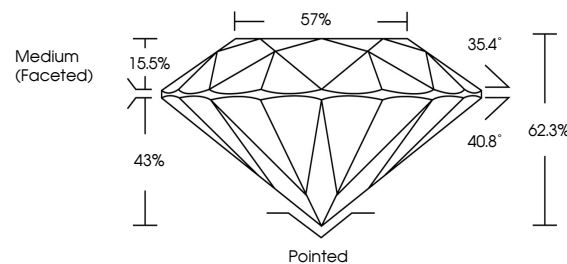
Polish	EXCELLENT
Symmetry	EXCELLENT
Fluorescence	NONE
Inscription(s)	 LG598335724

Comments: This Laboratory Grown Diamond was created by Chemical Vapor Deposition (CVD) growth process and may include post-growth treatment.  
Type IIa

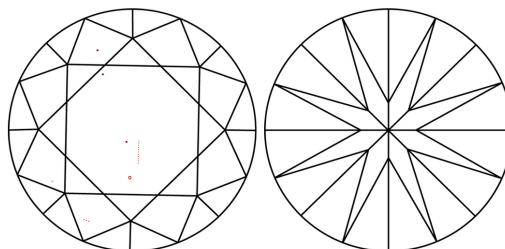
## LABORATORY GROWN DIAMOND REPORT

LG598335724  
Report verification at [lgi.org](https://lgi.org)

## PROPORTIONS



## CLARITY CHARACTERISTICS



## KEY TO SYMBOLS

Red symbols indicate internal characteristics.  
Green symbols indicate external characteristics.

LABORATORY GROWN  
DIAMOND REPORT

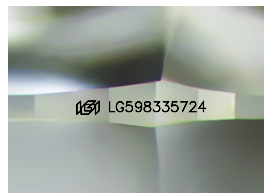
## GRADING SCALES

## CLARITY

IF	VVS <sup>1-2</sup>	VS <sup>1-2</sup>	SI <sup>1-2</sup>	I <sup>1-3</sup>
Internally Flawless	Very Very Slightly Included	Very Slightly Included	Slightly Included	Included

**COLOR**

D E F G H I J Faint Very Light Light



Sample Image Used



© IGI 2020, International Gemological Institute

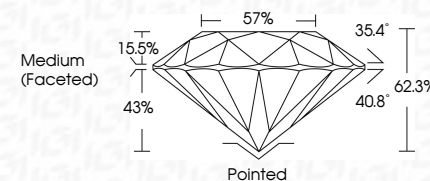
FD - 10 20

**www.igi.org**

## LABORATORY GROWN DIAMOND REPORT

September 9, 2023	
IGI Report Number	LG598335724
Description	LABORATORY GROWN DIAMOND
Shape and Cutting Style	ROUND BRILLIANT
Measurements	7.70 - 7.72 X 4.80 MM

GRADING RESULTS	
Carat Weight	1.77 CARAT
Color Grade	G
Clarity Grade	VS 1
Cut Grade	IDEAL



### ADDITIONAL GRADING INFORMATION

Polish	EXCELLENT
Symmetry	EXCELLENT
Fluorescence	NONE
Inscription(s)	16 LG598335724

Comments: This Laboratory Grown Diamond was created by Chemical Vapor Deposition (CVD) growth process and may include post-growth treatment.  
Type IIa



September 9, 2023	1.77 CARAT
GI Report No: LSG9835724	VS 1
ROUND BRILLIANT	IDEAL
	62.3%
	57%
	Medium (Faceted)
	Polished
	EXCELLENT
	EXCELLENT
	NONE
	#61 LSG9835724

Comments:  
 This is a Natural, Fancy, Round, Diamond was  
 created by Chemical Vapor Deposition  
 (CVD) growth process and may include  
 post-growth treatment.  
 Type IIa