



ELECTRONIC COPY

LG598348351

Report verification at igi.org

LABORATORY GROWN DIAMOND REPORT

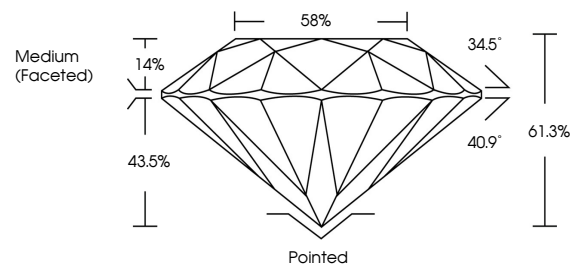
September 9, 2023
 IGI Report Number **LG598348351**
 Description **LABORATORY GROWN
DIAMOND**
 Shape and Cutting Style **ROUND BRILLIANT**
 Measurements **7.70 - 7.74 X 4.73 MM**
GRADING RESULTS
 Carat Weight **1.74 CARAT**
 Color Grade **G**
 Clarity Grade **VS 1**
 Cut Grade **IDEAL**

ADDITIONAL GRADING INFORMATION

Polish **EXCELLENT**
 Symmetry **EXCELLENT**
 Fluorescence **NONE**
 Inscription(s) **LG598348351**

Comments: This Laboratory Grown Diamond was created by Chemical Vapor Deposition (CVD) growth process and may include post-growth treatment. Type IIa

PROPORTIONS



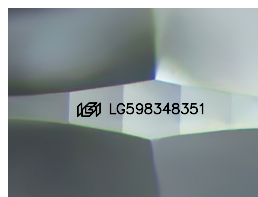
GRADING SCALES

CLARITY

IF	VVS ¹⁻²	VS ¹⁻²	SI ¹⁻²	I ¹⁻³
Internally Flawless	Very Very Slightly Included	Very Slightly Included	Slightly Included	Included

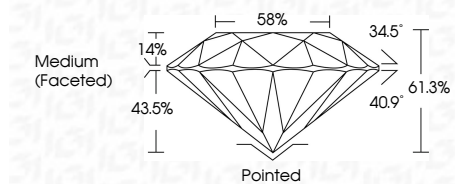
COLOR

D	E	F	G	H	I	J	Faint	Very Light	Light
---	---	---	---	---	---	---	-------	------------	-------



Sample Image Used

September 9, 2023
 IGI Report Number **LG598348351**
 Description **LABORATORY GROWN
DIAMOND**
 Shape and Cutting Style **ROUND BRILLIANT**
 Measurements **7.70 - 7.74 X 4.73 MM**
GRADING RESULTS
 Carat Weight **1.74 CARAT**
 Color Grade **G**
 Clarity Grade **VS 1**
 Cut Grade **IDEAL**



ADDITIONAL GRADING INFORMATION

Polish **EXCELLENT**
 Symmetry **EXCELLENT**
 Fluorescence **NONE**
 Inscription(s) **LG598348351**
 Comments: This Laboratory Grown Diamond was created by Chemical Vapor Deposition (CVD) growth process and may include post-growth treatment. Type IIa



September 9, 2023	IGI Report No LG598348351	ROUND BRILLIANT
7.70 - 7.74 X 4.73 MM	1.74 CARAT	G
Color Grade	VS 1	IDEAL
Clarity Grade	VS 1	IDEAL
Cut Grade	61.3%	88%
Table	14%	Medium (Faceted)
Girdle	43.5%	Pointed
Culet	None	EXCELLENT
Polish	EXCELLENT	EXCELLENT
Symmetry	EXCELLENT	NONE
Fluorescence	NONE	IGI LG598348351
Inscription(s)	IGI LG598348351	

Comments: This Laboratory Grown Diamond was created by Chemical Vapor Deposition (CVD) growth process and may include post-growth treatment. Type IIa