



ELECTRONIC COPY

LG598348384

Report verification at igi.org

LABORATORY GROWN DIAMOND REPORT

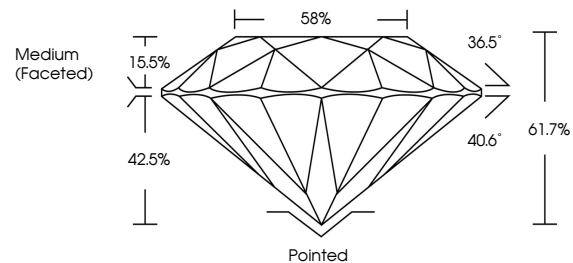
September 11, 2023
IGI Report Number LG598348384
Description LABORATORY GROWN DIAMOND
Shape and Cutting Style ROUND BRILLIANT
Measurements 8.08 - 8.12 X 4.99 MM
GRADING RESULTS
Carat Weight 2.03 CARATS
Color Grade H
Clarity Grade VS 2
Cut Grade EXCELLENT

ADDITIONAL GRADING INFORMATION

Polish EXCELLENT
Symmetry EXCELLENT
Fluorescence NONE
Inscription(s) IGI LG598348384

Comments: This Laboratory Grown Diamond was created by Chemical Vapor Deposition (CVD) growth process and may include post-growth treatment. Type IIa

PROPORTIONS



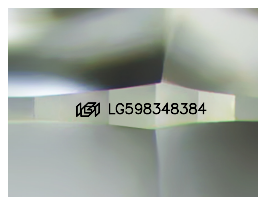
GRADING SCALES

CLARITY

Table with 5 columns: IF, VVS 1-2, VS 1-2, SI 1-2, I 1-3. Row 1: Internally Flawless, Very Very Slightly Included, Very Slightly Included, Slightly Included, Included

COLOR

Table with 11 columns: D, E, F, G, H, I, J, Faint, Very Light, Light

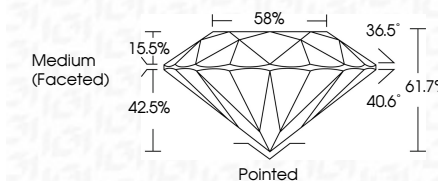


Sample Image Used

September 11, 2023
IGI Report Number LG598348384
Description LABORATORY GROWN DIAMOND
Shape and Cutting Style ROUND BRILLIANT
Measurements 8.08 - 8.12 X 4.99 MM
GRADING RESULTS
Carat Weight 2.03 CARATS
Color Grade H
Clarity Grade VS 2
Cut Grade EXCELLENT

ADDITIONAL GRADING INFORMATION

Polish EXCELLENT
Symmetry EXCELLENT
Fluorescence NONE
Inscription(s) IGI LG598348384
Comments: This Laboratory Grown Diamond was created by Chemical Vapor Deposition (CVD) growth process and may include post-growth treatment. Type IIa



IGI

September 11, 2023
IGI Report No LG598348384
ROUND BRILLIANT
8.08 - 8.12 X 4.99 MM
2.03 CARATS
Color Grade H
Clarity Grade VS 2
Depth 61.7%
Table 58%
Medium (Faceted)
Cutler Pointed
Polish EXCELLENT
Symmetry EXCELLENT
Fluorescence NONE
Inscriptions(s) IGI LG598348384
Comments: This Laboratory Grown Diamond was created by Chemical Vapor Deposition (CVD) growth process and may include post-growth treatment. Type IIa