



**ELECTRONIC COPY**

**LABORATORY GROWN DIAMOND REPORT**

LG598350779

Report verification at [igi.org](http://igi.org)

**LABORATORY GROWN  
DIAMOND REPORT**

**LABORATORY GROWN DIAMOND REPORT**

**LABORATORY GROWN DIAMOND REPORT**

September 11, 2023  
 IGI Report Number **LG598350779**  
 Description **LABORATORY GROWN  
DIAMOND**  
 Shape and Cutting Style **CUT CORNERED RECTANGULAR  
MODIFIED BRILLIANT**  
 Measurements **7.16 X 5.05 X 3.33 MM**

**GRADING RESULTS**

Carat Weight **1.05 CARAT**  
 Color Grade **D**  
 Clarity Grade **VVS 1**

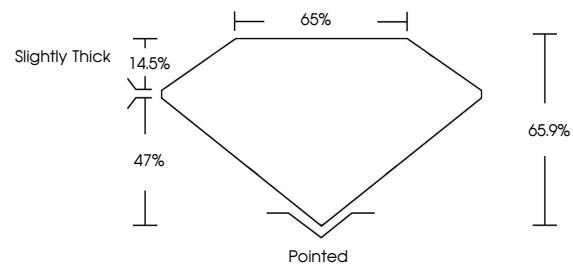
**ADDITIONAL GRADING INFORMATION**

Polish **EXCELLENT**  
 Symmetry **EXCELLENT**  
 Fluorescence **NONE**

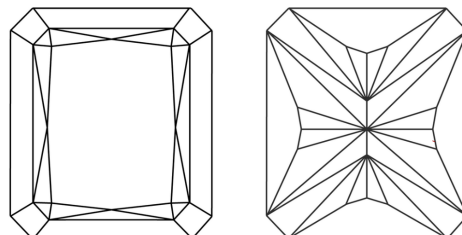
Inscription(s) **IGI LG598350779**

Comments: As Grown - No indication of post-growth treatment.  
 This Laboratory Grown Diamond was created by High Pressure High Temperature (HPHT) growth process.  
 Type II

**PROPORTIONS**



**CLARITY CHARACTERISTICS**



**KEY TO SYMBOLS**

Red symbols indicate internal characteristics.  
 Green symbols indicate external characteristics.

**GRADING SCALES**

**CLARITY**

IF	VVS <sup>1-2</sup>	VS <sup>1-2</sup>	SI <sup>1-2</sup>	I <sup>1-3</sup>
Internally Flawless	Very Very Slightly Included	Very Slightly Included	Slightly Included	Included

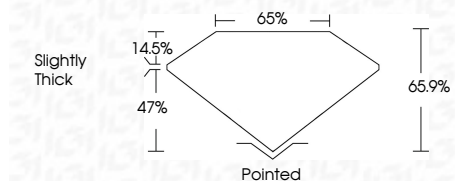
**COLOR**

D	E	F	G	H	I	J	Faint	Very Light	Light

September 11, 2023  
 IGI Report Number **LG598350779**  
 Description **LABORATORY GROWN  
DIAMOND**  
 Shape and Cutting Style **CUT CORNERED  
RECTANGULAR MODIFIED  
BRILLIANT**  
 Measurements **7.16 X 5.05 X 3.33 MM**

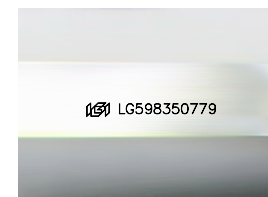
**GRADING RESULTS**

Carat Weight **1.05 CARAT**  
 Color Grade **D**  
 Clarity Grade **VVS 1**



**ADDITIONAL GRADING INFORMATION**

Polish **EXCELLENT**  
 Symmetry **EXCELLENT**  
 Fluorescence **NONE**  
 Inscription(s) **IGI LG598350779**  
 Comments: As Grown - No indication of post-growth treatment.  
 This Laboratory Grown Diamond was created by High Pressure High Temperature (HPHT) growth process.  
 Type II



Sample Image Used



September 11, 2023  
 IGI Report No. **LG598350779**  
**CUT CORNERED RECT. MODIFIED BRILLIANT**  
**7.16 X 5.05 X 3.33 MM**  
 Carat Weight **1.05 CARAT**  
 Color Grade **D**  
 Clarity Grade **VVS 1**  
 Depth **47%**  
 Table **14.5%**  
 Girdle **65%**  
 Slightly Thick  
 Pointed  
 Culet  
 Polish **EXCELLENT**  
 Symmetry **EXCELLENT**  
 Fluorescence **NONE**  
 Inscription(s) **IGI LG598350779**  
 Comments: As Grown - No indication of post-growth treatment.  
 This Laboratory Grown Diamond was created by High Pressure High Temperature (HPHT) growth process.  
 Type II