



ELECTRONIC COPY

LABORATORY GROWN DIAMOND REPORT

September 19, 2023
 IGI Report Number **LG598363839**
 Description **LABORATORY GROWN
DIAMOND**
 Shape and Cutting Style **EMERALD CUT**
 Measurements **8.65 X 5.40 X 3.45 MM**
GRADING RESULTS
 Carat Weight **1.60 CARAT**
 Color Grade **D**
 Clarity Grade **VS 1**

ADDITIONAL GRADING INFORMATION

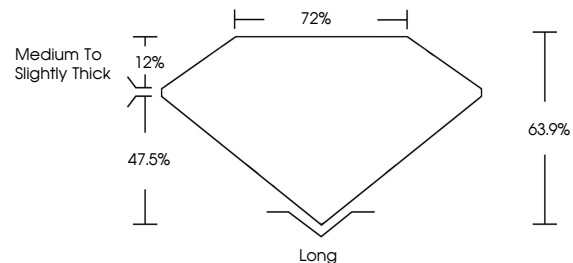
Polish **EXCELLENT**
 Symmetry **EXCELLENT**
 Fluorescence **NONE**
 Inscription(s) **IGI LG598363839**

Comments: This Laboratory Grown Diamond was created by Chemical Vapor Deposition (CVD) growth process and may include post-growth treatment. Type IIa

LABORATORY GROWN DIAMOND REPORT

LG598363839
 Report verification at igi.org

PROPORTIONS



**LABORATORY GROWN
DIAMOND REPORT**

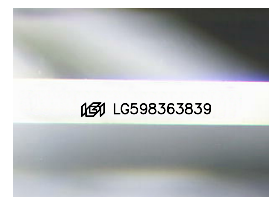
GRADING SCALES

CLARITY

IF	VVS ¹⁻²	VS ¹⁻²	SI ¹⁻²	I ¹⁻³
Internally Flawless	Very Very Slightly Included	Very Slightly Included	Slightly Included	Included

COLOR

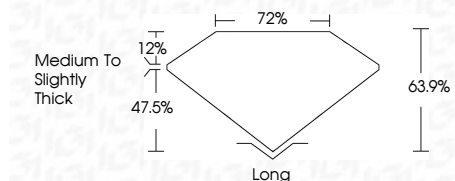
D	E	F	G	H	I	J	Faint	Very Light	Light
---	---	---	---	---	---	---	-------	------------	-------



Sample Image Used

LABORATORY GROWN DIAMOND REPORT

September 19, 2023
 IGI Report Number **LG598363839**
 Description **LABORATORY GROWN
DIAMOND**
 Shape and Cutting Style **EMERALD CUT**
 Measurements **8.65 X 5.40 X 3.45 MM**
GRADING RESULTS
 Carat Weight **1.60 CARAT**
 Color Grade **D**
 Clarity Grade **VS 1**



ADDITIONAL GRADING INFORMATION

Polish **EXCELLENT**
 Symmetry **EXCELLENT**
 Fluorescence **NONE**
 Inscription(s) **IGI LG598363839**
 Comments: This Laboratory Grown Diamond was created by Chemical Vapor Deposition (CVD) growth process and may include post-growth treatment. Type IIa



September 19, 2023
 IGI Report No. LG598363839
EMERALD CUT
 8.65 X 5.40 X 3.45 MM
 Carat Weight 1.60 CARAT
 Color Grade D
 Clarity Grade VS 1
 Depth 63.9%
 Table 72%
 Girdle Medium to Slightly Thick
 Culet Long
 Polish EXCELLENT
 Symmetry EXCELLENT
 Fluorescence NONE
 Inscription(s) IGI LG598363839

Comments: This Laboratory Grown Diamond was created by Chemical Vapor Deposition (CVD) growth process and may include post-growth treatment. Type IIa