



ELECTRONIC COPY

LABORATORY GROWN DIAMOND REPORT

September 13, 2023
 IGI Report Number **LG598380482**
 Description **LABORATORY GROWN
DIAMOND**
 Shape and Cutting Style **MARQUISE BRILLIANT**
 Measurements **18.19 X 8.23 X 4.77 MM**

GRADING RESULTS

Carat Weight **3.90 CARATS**
 Color Grade **H**
 Clarity Grade **VS 1**

ADDITIONAL GRADING INFORMATION

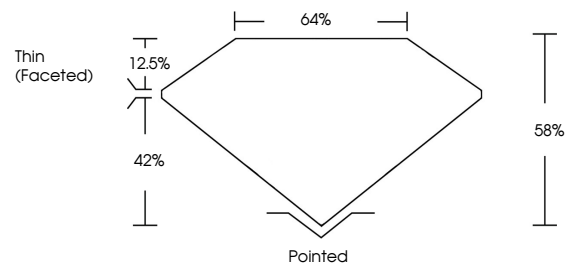
Polish **EXCELLENT**
 Symmetry **EXCELLENT**
 Fluorescence **NONE**
 Inscription(s) **IGI LG598380482**

Comments: This Laboratory Grown Diamond was created by Chemical Vapor Deposition (CVD) growth process and may include post-growth treatment. Type IIa

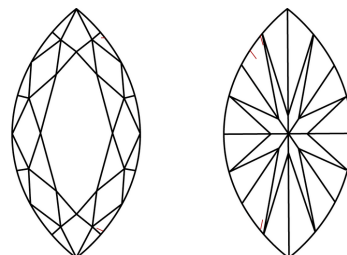
LABORATORY GROWN DIAMOND REPORT

LG598380482
 Report verification at igi.org

PROPORTIONS



CLARITY CHARACTERISTICS



KEY TO SYMBOLS

Red symbols indicate internal characteristics.
 Green symbols indicate external characteristics.

**LABORATORY GROWN
DIAMOND REPORT**

GRADING SCALES

CLARITY

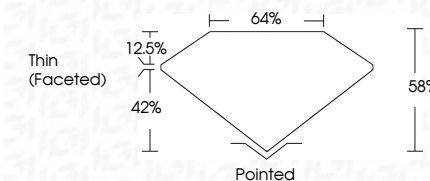
IF	VVS ¹⁻²	VS ¹⁻²	SI ¹⁻²	I ¹⁻³
Internally Flawless	Very Very Slightly Included	Very Slightly Included	Slightly Included	Included

COLOR

D	E	F	G	H	I	J	Faint	Very Light	Light
---	---	---	---	---	---	---	-------	------------	-------

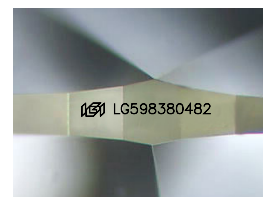
LABORATORY GROWN DIAMOND REPORT

September 13, 2023
 IGI Report Number **LG598380482**
 Description **LABORATORY GROWN
DIAMOND**
 Shape and Cutting Style **MARQUISE BRILLIANT**
 Measurements **18.19 X 8.23 X 4.77 MM**
GRADING RESULTS
 Carat Weight **3.90 CARATS**
 Color Grade **H**
 Clarity Grade **VS 1**



ADDITIONAL GRADING INFORMATION

Polish **EXCELLENT**
 Symmetry **EXCELLENT**
 Fluorescence **NONE**
 Inscription(s) **IGI LG598380482**
 Comments: This Laboratory Grown Diamond was created by Chemical Vapor Deposition (CVD) growth process and may include post-growth treatment. Type IIa



Sample Image Used



IGI

September 13, 2023
 IGI Report No **LG598380482**
MARQUISE BRILLIANT
3.90 CARATS H
 Carat Weight
 Color Grade
 Clarity Grade
 Depth
 Table
 Girdle
 Thin (Faceted)
 Pointed
 EXCELLENT
 EXCELLENT
 NONE
 IGI LG598380482

Comments: This Laboratory Grown Diamond was created by Chemical Vapor Deposition (CVD) growth process and may include post-growth treatment. Type IIa