



ELECTRONIC COPY

LABORATORY GROWN DIAMOND REPORT

September 13, 2023
 IGI Report Number **LG598382222**
 Description **LABORATORY GROWN
DIAMOND**
 Shape and Cutting Style **ROUND BRILLIANT**
 Measurements **15.34 - 15.43 X 9.24 MM**

GRADING RESULTS

Carat Weight **13.26 CARATS**
 Color Grade **F**
 Clarity Grade **SI 1**
 Cut Grade **IDEAL**

ADDITIONAL GRADING INFORMATION

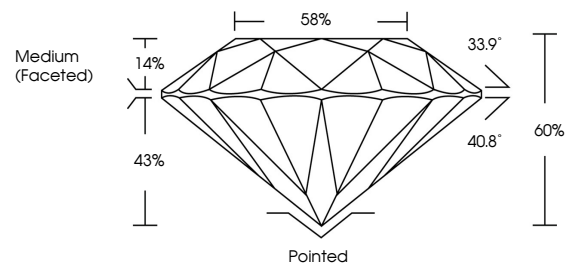
Polish **EXCELLENT**
 Symmetry **EXCELLENT**
 Fluorescence **NONE**
 Inscription(s) **IGI LG598382222**

Comments: This Laboratory Grown Diamond was created by Chemical Vapor Deposition (CVD) growth process and may include post-growth treatment. Type IIa

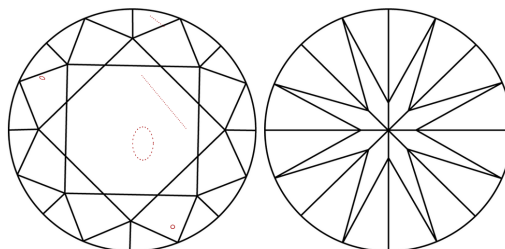
LABORATORY GROWN DIAMOND REPORT

LG598382222
 Report verification at igi.org

PROPORTIONS



CLARITY CHARACTERISTICS



KEY TO SYMBOLS

Red symbols indicate internal characteristics.
 Green symbols indicate external characteristics.

**LABORATORY GROWN
DIAMOND REPORT**

GRADING SCALES

CLARITY

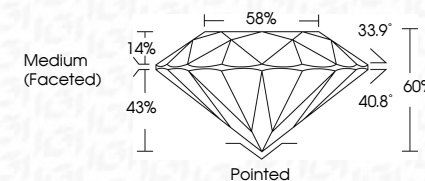
IF	VVS ¹⁻²	VS ¹⁻²	SI ¹⁻²	I ¹⁻³
Internally Flawless	Very Very Slightly Included	Very Slightly Included	Slightly Included	Included

COLOR

D	E	F	G	H	I	J	Faint	Very Light	Light
---	---	---	---	---	---	---	-------	------------	-------

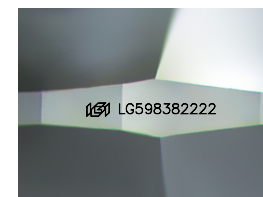
LABORATORY GROWN DIAMOND REPORT

September 13, 2023
 IGI Report Number **LG598382222**
 Description **LABORATORY GROWN
DIAMOND**
 Shape and Cutting Style **ROUND BRILLIANT**
 Measurements **15.34 - 15.43 X 9.24 MM**
GRADING RESULTS
 Carat Weight **13.26 CARATS**
 Color Grade **F**
 Clarity Grade **SI 1**
 Cut Grade **IDEAL**



ADDITIONAL GRADING INFORMATION

Polish **EXCELLENT**
 Symmetry **EXCELLENT**
 Fluorescence **NONE**
 Inscription(s) **IGI LG598382222**
 Comments: This Laboratory Grown Diamond was created by Chemical Vapor Deposition (CVD) growth process and may include post-growth treatment. Type IIa



Sample Image Used



September 13, 2023
 IGI Report No LG598382222
ROUND BRILLIANT

15.34 - 15.43 X 9.24 MM

13.26 CARATS

F

SI 1

IDEAL

60%

58%

Medium (Faceted)

Pointed

EXCELLENT

EXCELLENT

NONE

IGI LG598382222

Culet

Polish

Symmetry

Fluorescence

Inscriptions(s)

Comments:
 This Laboratory Grown Diamond was created by Chemical Vapor Deposition (CVD) growth process and may include post-growth treatment. Type IIa