



**ELECTRONIC COPY**

**LABORATORY GROWN DIAMOND REPORT**

September 13, 2023  
 IGI Report Number **LG598386885**  
 Description **LABORATORY GROWN  
DIAMOND**  
 Shape and Cutting Style **CUT CORNERED RECTANGULAR  
MODIFIED BRILLIANT**  
 Measurements **6.33 X 5.05 X 3.37 MM**

**GRADING RESULTS**

Carat Weight **1.02 CARAT**  
 Color Grade **E**  
 Clarity Grade **VS 1**

**ADDITIONAL GRADING INFORMATION**

Polish **VERY GOOD**  
 Symmetry **VERY GOOD**  
 Fluorescence **NONE**

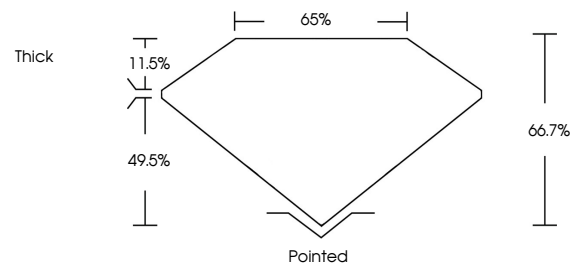
Inscription(s) **IGI LG598386885**

Comments: As Grown - No indication of post-growth treatment.  
 This Laboratory Grown Diamond was created by High Pressure High Temperature (HPHT) growth process.  
 Type II

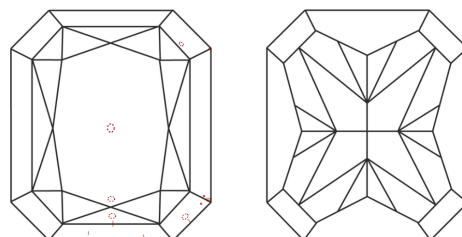
**LABORATORY GROWN DIAMOND REPORT**

**LG598386885**  
 Report verification at [igi.org](http://igi.org)

**PROPORTIONS**



**CLARITY CHARACTERISTICS**



**KEY TO SYMBOLS**

Red symbols indicate internal characteristics.  
 Green symbols indicate external characteristics.

**LABORATORY GROWN  
DIAMOND REPORT**

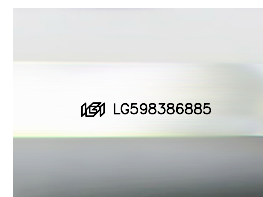
**GRADING SCALES**

**CLARITY**

IF	VVS <sup>1-2</sup>	VS <sup>1-2</sup>	SI <sup>1-2</sup>	I <sup>1-3</sup>
Internally Flawless	Very Very Slightly Included	Very Slightly Included	Slightly Included	Included

**COLOR**

D	E	F	G	H	I	J	Faint	Very Light	Light
---	---	---	---	---	---	---	-------	------------	-------



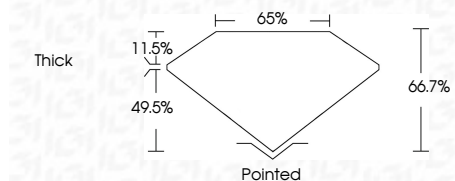
Sample Image Used

**LABORATORY GROWN DIAMOND REPORT**

September 13, 2023  
 IGI Report Number **LG598386885**  
 Description **LABORATORY GROWN  
DIAMOND**  
 Shape and Cutting Style **CUT CORNERED  
RECTANGULAR MODIFIED  
BRILLIANT**  
 Measurements **6.33 X 5.05 X 3.37 MM**

**GRADING RESULTS**

Carat Weight **1.02 CARAT**  
 Color Grade **E**  
 Clarity Grade **VS 1**



**ADDITIONAL GRADING INFORMATION**

Polish **VERY GOOD**  
 Symmetry **VERY GOOD**  
 Fluorescence **NONE**  
 Inscription(s) **IGI LG598386885**

Comments: As Grown - No indication of post-growth treatment.  
 This Laboratory Grown Diamond was created by High Pressure High Temperature (HPHT) growth process.  
 Type II



**IGI**

September 13, 2023  
 IGI Report No **LG598386885**  
**CUT CORNERED RECT. MODIFIED BRILLIANT**  
**6.33 X 5.05 X 3.37 MM**  
 Carat Weight **1.02 CARAT**  
 Color Grade **E**  
 Clarity Grade **VS 1**  
 Depth **66.7%**  
 Table **65%**  
 Girdle **Thick**  
 Culet **Pointed**  
 Polish **VERY GOOD**  
 Symmetry **VERY GOOD**  
 Fluorescence **NONE**  
 Inscription(s) **IGI LG598386885**

Comments: As Grown - No indication of post-growth treatment.  
 This Laboratory Grown Diamond was created by High Pressure High Temperature (HPHT) growth process.  
 Type II

