

**ELECTRONIC COPY**

## LABORATORY GROWN DIAMOND REPORT

|                         |                             |
|-------------------------|-----------------------------|
| September 29, 2023      |                             |
| IGI Report Number       | LG600300282                 |
| Description             | LABORATORY GROWN<br>DIAMOND |
| Shape and Cutting Style | ROUND BRILLIANT             |
| Measurements            | 6.72 - 6.76 X 4.18 MM       |

## GRADING RESULTS

|               |            |
|---------------|------------|
| Carat Weight  | 1.16 CARAT |
| Color Grade   | D          |
| Clarity Grade | VVS 2      |
| Cut Grade     | IDEAL      |

### ADDITIONAL GRADING INFORMATION

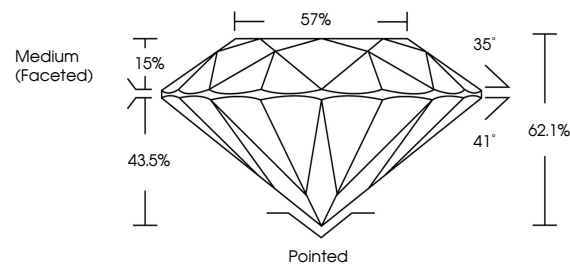
|                |   |
|----------------|---|
| Polish         | EXCELLENT   |
| Symmetry       | EXCELLENT   |
| Fluorescence   | NONE  |
| Inscription(s) |  LG600300282 |

Comments: As Grown - No indication of post-growth treatment.  
This Laboratory Grown Diamond was created by High Pressure High Temperature (HPHT) growth process.  
Type II

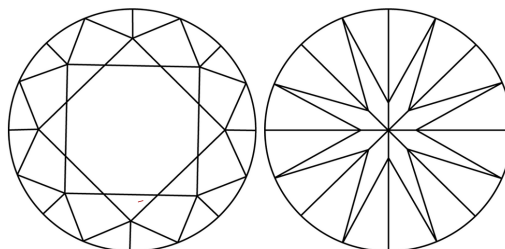
## LABORATORY GROWN DIAMOND REPORT

LG600300282  
Report verification at [lgi.org](https://lgi.org)

## PROPORTIONS



## CLARITY CHARACTERISTICS



## KEY TO SYMBOLS

Red symbols indicate internal characteristics.  
Green symbols indicate external characteristics.

LABORATORY GROWN  
DIAMOND REPORT

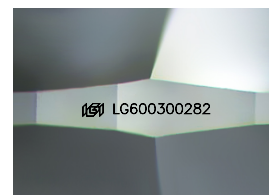
## GRADING SCALES

## CLARITY

| IF                     | VVS <sup>1-2</sup>             | VS <sup>1-2</sup>         | SI <sup>1-2</sup>    | I <sup>1-3</sup> |
|------------------------|--------------------------------|---------------------------|----------------------|------------------|
| Internally<br>Flawless | Very Very<br>Slightly Included | Very<br>Slightly Included | Slightly<br>Included | Included         |

**COLOR**

D E F G H I J Faint Very Light Light



Sample Image Used



© IGI 2020, International Gemological Institute

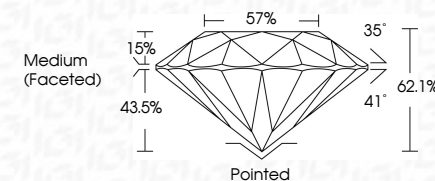
FD - 10 20

## LABORATORY GROWN DIAMOND REPORT

|                         |                             |
|-------------------------|-----------------------------|
| September 29, 2023      |                             |
| IGI Report Number       | LG600300282                 |
| Description             | LABORATORY GROWN<br>DIAMOND |
| Shape and Cutting Style | ROUND BRILLIANT             |
| Measurements            | 6.72 - 6.76 X 4.18 MM       |

## GRADING RESULTS

|               |            |
|---------------|------------|
| Carat Weight  | 1.16 CARAT |
| Color Grade   | D          |
| Clarity Grade | VVS 2      |
| Cut Grade     | IDEAL      |



### ADDITIONAL GRADING INFORMATION

|  |   |
|--|---|
| Polish   | EXCELLENT   |
| Symmetry   | EXCELLENT   |
| Fluorescence   | NONE  |
| Inscription(s)   |  LG600300282 |
| Comments: As Grown - No indication of post-growth treatment.                                       |   |
| This Laboratory Grown Diamond was created by High Pressure High Temperature (HPHT) growth process. |   |
| Type II  |   |



|                           |   |
|---------------------------|---|
| September 29, 2023        | 1.16 CARAT  |
| IGI Report No. LG50300282 | VVS 2   |
| ROUND BRILLIANT           | IDEAL   |
|                           | 62.1%   |
|                           | 57%   |
|                           | Medium (Faceted)  |
|                           | Pointed   |
|                           | EXCELLENT   |
|                           | EXCELLENT   |
|                           | NONE  |
|                           | 46N LG50300282  |
| 4.72 - 4.76 X 4.18 MM     |   |
| Carat Weight              |   |
| Color Grade               |   |
| Clarity Grade             |   |
| Cut Grade                 |   |
| Depth                     |   |
| Table                     |   |
| Girdle                    |   |
| Culet                     |   |
| Polish                    |   |
| Symmetry                  |   |
| Fluorescence              |   |
| Inclusions(s)             |   |
| Comments:                 |   |
|                           | No indication of post-growth treatment.   |
|                           | This Laboratory Growth Diamond was created by High Pressure High Temperature (HPHT) growth process. |
|                           | Type II   |