



ELECTRONIC COPY

LABORATORY GROWN DIAMOND REPORT

September 15, 2023	
IGI Report Number	LG600325913
Description	LABORATORY GROWN DIAMOND
Shape and Cutting Style	EMERALD CUT
Measurements	10.09 X 6.56 X 4.52 MM

GRADING RESULTS

Carat Weight	3.01 CARATS
Color Grade	G
Clarity Grade	SI 1

ADDITIONAL GRADING INFORMATION

Polish	EXCELLENT
Symmetry	EXCELLENT
Fluorescence	NONE
Inscription(s)	 LG600325913

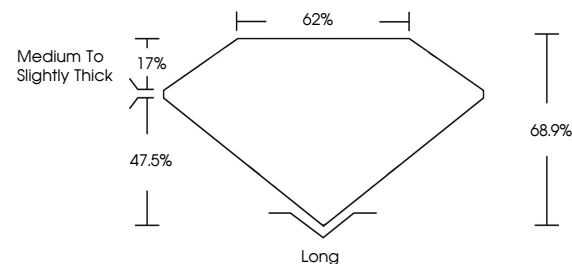
Comments: This Laboratory Grown Diamond was created by Chemical Vapor Deposition (CVD) growth process and may include post-growth treatment.
Type IIa

LABORATORY GROWN DIAMOND REPORT

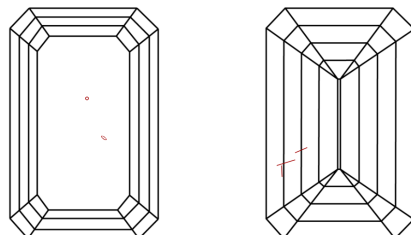
LG600325913

Report verification at igi.org

PROPORTIONS



CLARITY CHARACTERISTICS



KEY TO SYMBOLS

Red symbols indicate internal characteristics.
Green symbols indicate external characteristics.

LABORATORY GROWN
DIAMOND REPORT

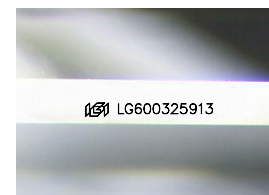
GRADING SCALES

CLARITY

IF	VVS ¹⁻²	VS ¹⁻²	SI ¹⁻²	I ¹⁻³
Internally Flawless	Very Very Slightly Included	Very Slightly Included	Slightly Included	Included

COLOR

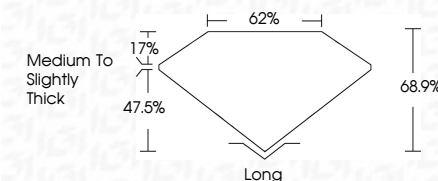
D E F G H I J Faint Very Light Light



Sample Image Used



September 15, 2023	
IGI Report Number	LG600325913
Description	LABORATORY GROWN DIAMOND
Shape and Cutting Style	EMERALD CUT
Measurements	10.09 X 6.56 X 4.52 MM
GRADING RESULTS	
Carat Weight	3.01 CARATS
Color Grade	G
Clarity Grade	S1 1



ADDITIONAL GRADING INFORMATION

Polish	EXCELLENT
Symmetry	EXCELLENT
Fluorescence	NONE
Inscription(s)	(15) LG600325913

Comments: This Laboratory Grown Diamond was created by Chemical Vapor Deposition (CVD) growth process and may include post-growth treatment.
Type IIa



© IGI 2020, International Gemological Institute

FD - 10 20

www.igi.org

September 15, 2023
 IGI Report No LG600325913
 EMERALD CITT

10.09 X 4.55 X 4.52 MM	Carat Weight	3.01 CARATS
	Color Grade	G
	Clarity Grade	S1
	Depth	68.9%
	Table	62%
	Grade	Medium To Slightly Thick
	Color	Long
	Fluorescence	EXCELLENT
	Symmetry	EXCELLENT
	Fluorescence	NONE
	Fluorescence	gem/csm/00202033

Comments:
This Laboratory Grown Diamond was created by Chemical Vapor Deposition (CVD) growth process and may include post-growth treatment.