

ELECTRONIC COPY

LABORATORY GROWN DIAMOND REPORT

September 27, 2023	
IGI Report Number	LG600332850
Description	LABORATORY GROWN DIAMOND
Shape and Cutting Style	CUT CORNERED RECTANGULAR MODIFIED BRILLIANT
Measurements	11.03 X 7.70 X 5.10 MM

GRADING RESULTS

Carat Weight	4.10 CARATS
Color Grade	F
Clarity Grade	VVS 2

ADDITIONAL GRADING INFORMATION

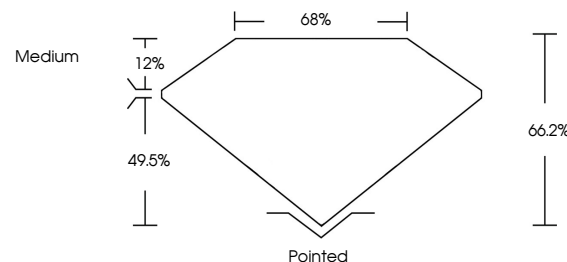
Polish	EXCELLENT
Symmetry	EXCELLENT
Fluorescence	NONE
Inscription(s)	 LG600332850

Comments: This Laboratory Grown Diamond was created by Chemical Vapor Deposition (CVD) growth process and may include post-growth treatment.
Type IIa

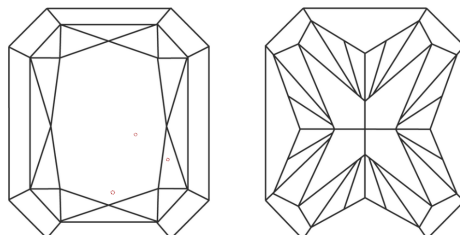
LABORATORY GROWN DIAMOND REPORT

LG600332850
Report verification at igi.org

PROPORTIONS



CLARITY CHARACTERISTICS



KEY TO SYMBOLS

Red symbols indicate internal characteristics.
Green symbols indicate external characteristics.

LABORATORY GROWN
DIAMOND REPORT

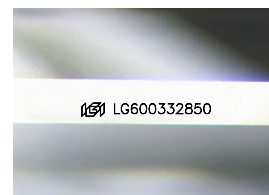
GRADING SCALES

CLARITY

IF	VVS ¹⁻²	VS ¹⁻²	SI ¹⁻²	I ¹⁻³
Internally Flawless	Very Very Slightly Included	Very Slightly Included	Slightly Included	Included

COLOR

D E F G H I J Faint Very Light Light



Sample Image Used

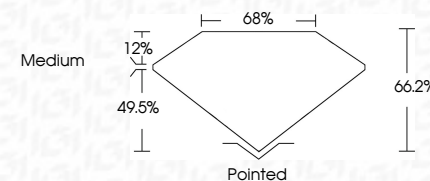


© IGI 2020, International Gemological Institute

FD - 10 20

LABORATORY GROWN DIAMOND REPORT

September 27, 2023	
IGI Report Number	LG600332850
Description	LABORATORY GROWN DIAMOND
Shape and Cutting Style	CUT CORNERED RECTANGULAR MODIFIED BRILLIANT
Measurements	11.03 X 7.70 X 5.10 MM
GRADING RESULTS	
Carat Weight	4.10 CARATS
Color Grade	F
Clarity Grade	VVS 2



ADDITIONAL GRADING INFORMATION

Polish	EXCELLENT
Symmetry	EXCELLENT
Fluorescence	NONE
Inscription(s)	 LG-600332850

Comments: This Laboratory Grown Diamond was created by Chemical Vapor Deposition (CVD) growth process and may include post-growth treatment.
Type IIa



September 27, 2023	GI Report No LG40332850	CU CORNERED RECT, MODIFIED BRILLIANT
11.03 X 7.70 X 5.10 MM		
Carat Weight	Color Grade	Clarity Grade
4.10 CARATS	F	VVS 2
		66.2%
		66%
		Medium
		Polished
		EXCELLENT
		EXCELLENT
		NONE
		681 LG40332850

Comments: Chemically Grown Diamond was treated by Chemical Vapor Deposition (CVD) growth process and may include post-growth treatment.

Type IIA