



ELECTRONIC COPY

LABORATORY GROWN DIAMOND REPORT

LG600351858

Report verification at igi.org

**LABORATORY GROWN
DIAMOND REPORT**

LABORATORY GROWN DIAMOND REPORT

LABORATORY GROWN DIAMOND REPORT

September 21, 2023
 IGI Report Number **LG600351858**
 Description **LABORATORY GROWN
DIAMOND**
 Shape and Cutting Style **ROUND BRILLIANT**
 Measurements **9.00 - 9.02 X 5.46 MM**

GRADING RESULTS

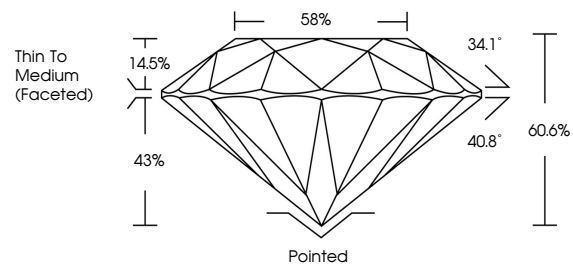
Carat Weight **2.71 CARATS**
 Color Grade **F**
 Clarity Grade **VS 1**
 Cut Grade **IDEAL**

ADDITIONAL GRADING INFORMATION

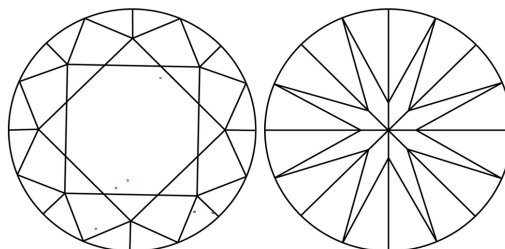
Polish **EXCELLENT**
 Symmetry **EXCELLENT**
 Fluorescence **NONE**
 Inscription(s) **IGI LG600351858**

Comments: HEARTS & ARROWS
 This Laboratory Grown Diamond was created by
 Chemical Vapor Deposition (CVD) growth process and
 may include post-growth treatment.
 Type IIa

PROPORTIONS



CLARITY CHARACTERISTICS



KEY TO SYMBOLS

Red symbols indicate internal characteristics.
 Green symbols indicate external characteristics.



GRADING SCALES

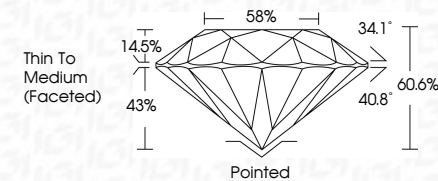
CLARITY

IF	VVS ¹⁻²	VS ¹⁻²	SI ¹⁻²	I ¹⁻³
Internally Flawless	Very Very Slightly Included	Very Slightly Included	Slightly Included	Included

COLOR

D	E	F	G	H	I	J	Faint	Very Light	Light

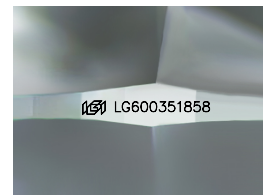
September 21, 2023
 IGI Report Number **LG600351858**
 Description **LABORATORY GROWN
DIAMOND**
 Shape and Cutting Style **ROUND BRILLIANT**
 Measurements **9.00 - 9.02 X 5.46 MM**
GRADING RESULTS
 Carat Weight **2.71 CARATS**
 Color Grade **F**
 Clarity Grade **VS 1**
 Cut Grade **IDEAL**



ADDITIONAL GRADING INFORMATION

Polish **EXCELLENT**
 Symmetry **EXCELLENT**
 Fluorescence **NONE**
 Inscription(s) **IGI LG600351858**

Comments: HEARTS & ARROWS
 This Laboratory Grown Diamond was created by
 Chemical Vapor Deposition (CVD) growth process and
 may include post-growth treatment.
 Type IIa



Sample Image Used



September 21, 2023
 IGI Report No LG600351858
ROUND BRILLIANT

9.00 - 9.02 X 5.46 MM

Carat Weight **2.71 CARATS**

Color Grade **F**

Clarity Grade **VS 1**

Cut Grade **IDEAL**

Depth **60.6%**

Table **58%**

Girdle **Thin To Medium (Faceted)**

Culet **Pointed**

Polish **EXCELLENT**

Symmetry **EXCELLENT**

Fluorescence **NONE**

Inscriptions(s) **IGI LG600351858**

Comments: HEARTS & ARROWS
 This Laboratory Grown Diamond was
 created by Chemical Vapor Deposition
 (CVD) growth process and may include
 post-growth treatment.
 Type IIa