



**INTERNATIONAL
GEMOLOGICAL
INSTITUTE**

ELECTRONIC COPY

**LABORATORY GROWN
DIAMOND REPORT**

LG600384262

**IGI LABORATORY GROWN
DIAMOND ID REPORT**

September 29, 2023

IGI Report Number **LG600384262**

CUSHION BRILLIANT

6.90 X 4.63 X 2.96 MM

| | |
|----------------|-------------|
| Carat Weight | 0.78 CARAT |
| Color Grade | G |
| Clarity Grade | VS 2 |
| Cut Grade | VERY GOOD |
| Polish | EXCELLENT |
| Symmetry | EXCELLENT |
| Fluorescence | NONE |
| Inscription(s) | LG600384262 |

Comments: This Laboratory Grown Diamond was created by Chemical Vapor Deposition (CVD) growth process and may include post-growth treatment. Type Ila

LABORATORY GROWN DIAMOND REPORT

IGI LABORATORY GROWN DIAMOND IDENTIFICATION REPORT

September 29, 2023

IGI Report Number **LG600384262**

Description **LABORATORY GROWN DIAMOND**

Shape and Cutting Style **CUSHION BRILLIANT**

Measurements **6.90 X 4.63 X 2.96 MM**

GRADING RESULTS

Carat Weight **0.78 CARAT**

Color Grade **G**

Clarity Grade **VS 2**

Cut Grade **VERY GOOD**

ADDITIONAL GRADING INFORMATION

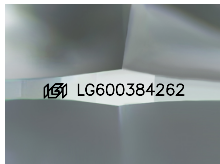
Polish **EXCELLENT**

Symmetry **EXCELLENT**

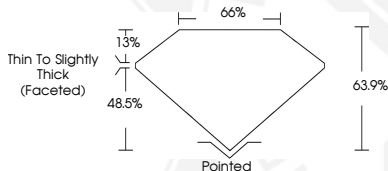
Fluorescence **NONE**

Inscription(s) **LG600384262**

Comments: This Laboratory Grown Diamond was created by Chemical Vapor Deposition (CVD) growth process and may include post-growth treatment. Type Ila



Sample Image Used



**IGI LABORATORY GROWN
DIAMOND ID REPORT**

September 29, 2023

IGI Report Number **LG600384262**

CUSHION BRILLIANT

6.90 X 4.63 X 2.96 MM

Carat Weight **0.78 CARAT**

Color Grade **G**

Clarity Grade **VS 2**

Cut Grade **VERY GOOD**

Polish **EXCELLENT**

Symmetry **EXCELLENT**

Fluorescence **NONE**

Inscription(s) **LG600384262**

Comments: This Laboratory Grown Diamond was created by Chemical Vapor Deposition (CVD) growth process and may include post-growth treatment. Type Ila

THIS DOCUMENT WAS PRODUCED WITH THE FOLLOWING SECURITY MEASURES: SPECIAL DOCUMENT PAPER, INK SCREENS, WATERMARK, BACKGROUND DESIGN, HOLOGRAM AND OTHER SECURITY FEATURES NOT LISTED AND DO EXCEED DOCUMENT SECURITY INDUSTRY GUIDELINES.

For terms & conditions and to verify this report, please visit www.igi.org