



ELECTRONIC COPY

LABORATORY GROWN DIAMOND REPORT

LG601304411

Report verification at igi.org

**LABORATORY GROWN
DIAMOND REPORT**

LABORATORY GROWN DIAMOND REPORT

LABORATORY GROWN DIAMOND REPORT

September 30, 2023
IGI Report Number **LG601304411**
Description **LABORATORY GROWN
DIAMOND**
Shape and Cutting Style **SQUARE CUSHION BRILLIANT**
Measurements **6.89 X 6.76 X 4.41 MM**

GRADING RESULTS

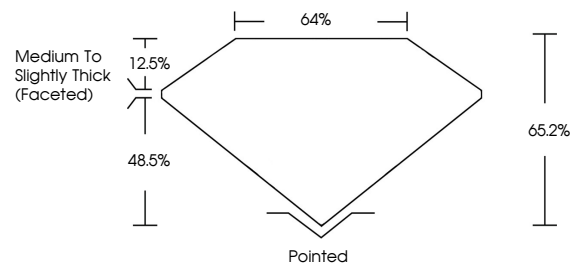
Carat Weight **1.61 CARAT**
Color Grade **D**
Clarity Grade **VS 1**

ADDITIONAL GRADING INFORMATION

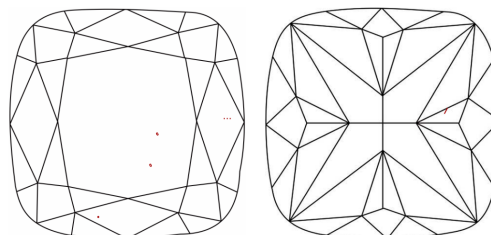
Polish **EXCELLENT**
Symmetry **EXCELLENT**
Fluorescence **NONE**
Inscription(s) **IGI LG601304411**

Comments: This Laboratory Grown Diamond was created by Chemical Vapor Deposition (CVD) growth process and may include post-growth treatment. Type IIa

PROPORTIONS



CLARITY CHARACTERISTICS



KEY TO SYMBOLS

Red symbols indicate internal characteristics.
Green symbols indicate external characteristics.

GRADING SCALES

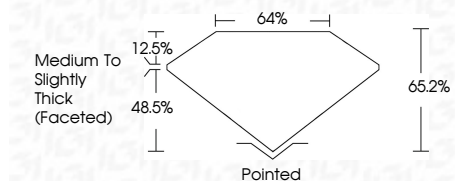
CLARITY

IF	VVS ¹⁻²	VS ¹⁻²	SI ¹⁻²	I ¹⁻³
Internally Flawless	Very Very Slightly Included	Very Slightly Included	Slightly Included	Included

COLOR

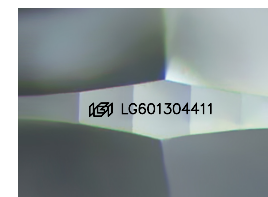
D	E	F	G	H	I	J	Faint	Very Light	Light
---	---	---	---	---	---	---	-------	------------	-------

September 30, 2023
IGI Report Number **LG601304411**
Description **LABORATORY GROWN
DIAMOND**
Shape and Cutting Style **SQUARE CUSHION BRILLIANT**
Measurements **6.89 X 6.76 X 4.41 MM**
GRADING RESULTS
Carat Weight **1.61 CARAT**
Color Grade **D**
Clarity Grade **VS 1**



ADDITIONAL GRADING INFORMATION

Polish **EXCELLENT**
Symmetry **EXCELLENT**
Fluorescence **NONE**
Inscription(s) **IGI LG601304411**
Comments: This Laboratory Grown Diamond was created by Chemical Vapor Deposition (CVD) growth process and may include post-growth treatment. Type IIa



Sample Image Used



IGI

September 30, 2023
IGI Report No LG601304411
SQUARE CUSHION BRILLIANT
6.89 X 6.76 X 4.41 MM
1.61 CARAT
D
VS 1
65.2%
48.5%
12.5%
Medium to Slightly Thick (Faceted)
Pointed
EXCELLENT
EXCELLENT
NONE
IGI LG601304411

Comments: This Laboratory Grown Diamond was created by Chemical Vapor Deposition (CVD) growth process and may include post-growth treatment. Type IIa