



ELECTRONIC COPY

LABORATORY GROWN DIAMOND REPORT

LG601320589

Report verification at igi.org

**LABORATORY GROWN
DIAMOND REPORT**

LABORATORY GROWN DIAMOND REPORT

LABORATORY GROWN DIAMOND REPORT

October 11, 2023
 IGI Report Number **LG601320589**
 Description **LABORATORY GROWN
DIAMOND**
 Shape and Cutting Style **CUT CORNERED SQUARE
MODIFIED BRILLIANT**
 Measurements **8.77 X 8.74 X 5.91 MM**

GRADING RESULTS

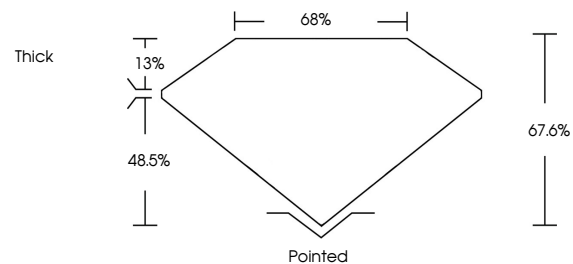
Carat Weight **4.02 CARATS**
 Color Grade **G**
 Clarity Grade **VVS 2**

ADDITIONAL GRADING INFORMATION

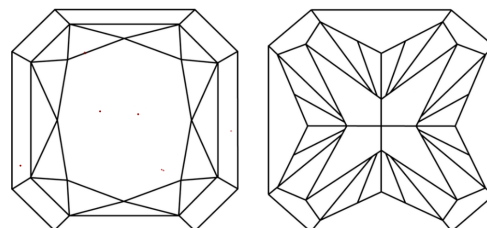
Polish **EXCELLENT**
 Symmetry **EXCELLENT**
 Fluorescence **NONE**
 Inscription(s) **IGI LG601320589**

Comments: This Laboratory Grown Diamond was created by Chemical Vapor Deposition (CVD) growth process and may include post-growth treatment. Type IIa

PROPORTIONS



CLARITY CHARACTERISTICS



KEY TO SYMBOLS

Red symbols indicate internal characteristics.
 Green symbols indicate external characteristics.

GRADING SCALES

CLARITY

IF	VVS ¹⁻²	VS ¹⁻²	SI ¹⁻²	I ¹⁻³
Internally Flawless	Very Very Slightly Included	Very Slightly Included	Slightly Included	Included

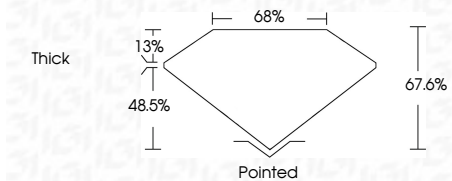
COLOR

D	E	F	G	H	I	J	Faint	Very Light	Light
---	---	---	---	---	---	---	-------	------------	-------

October 11, 2023
 IGI Report Number **LG601320589**
 Description **LABORATORY GROWN
DIAMOND**
 Shape and Cutting Style **CUT CORNERED SQUARE
MODIFIED BRILLIANT**
 Measurements **8.77 X 8.74 X 5.91 MM**

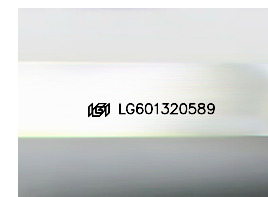
GRADING RESULTS

Carat Weight **4.02 CARATS**
 Color Grade **G**
 Clarity Grade **VVS 2**



ADDITIONAL GRADING INFORMATION

Polish **EXCELLENT**
 Symmetry **EXCELLENT**
 Fluorescence **NONE**
 Inscription(s) **IGI LG601320589**
 Comments: This Laboratory Grown Diamond was created by Chemical Vapor Deposition (CVD) growth process and may include post-growth treatment. Type IIa



Sample Image Used



IGI

October 11, 2023
 IGI Report No LG601320589
CUT CORNERED SQUARE MODIFIED BRILLIANT
 8.77 X 8.74 X 5.91 MM
 Carat Weight **4.02 CARATS**
 Color Grade **G**
 Clarity Grade **VVS 2**
 Depth **67.6%**
 Table **65%**
 Girdle **Thick**
 Culet **Pointed**
 Polish **EXCELLENT**
 Symmetry **EXCELLENT**
 Fluorescence **NONE**
 Inscription(s) **IGI LG601320589**

Comments: This Laboratory Grown Diamond was created by Chemical Vapor Deposition (CVD) growth process and may include post-growth treatment. Type IIa